

2015 2015 YOUTH IMPACT REPORT

National 4-H Council celebrates a successful year of growing 4-H'ers who are prepared for life today and careers tomorrow



2015 Highlights

National Riding It Forward Campaign takes off from National 4-H Conference Center, bringing major attention to 4-H healthy living mission.



JULY

Council awarded \$9.8 million (largest award since 2010) from the U.S. Office of Juvenile Justice and Delinquency Prevention to support 4-H National Mentoring Program.



SEPTEMBER

Grammy award-winning singer, songwriter and 4-H national spokesperson Jennifer Nettles rocks Nashville during 4-H Music City Alumni Reunion.



NOVEMBER

New 4-HMall.org is designed to improve customer shopping experience site navigation. In six months, website updates drive 12% increase in online revenue.



JANUARY

Historically black land-grant universities commemorate the 125th anniversary of the 1890 Morrill Act with events throughout 2015.



MARCH

Tractor Supply Company and Council partnership recognized for excellence; Paper Clover Campaign celebrates record-breaking fundraising season.



MAY



AUGUST



United States Hispanic Chamber of Commerce and National 4-H Council announce new, strategic partnership during signing ceremony at National 4-H Conference Center.

OCTOBER



7th annual 4-H National Youth Science Day is major success thanks to the popularity of the *Rockets to the Rescue* experiment created by the University of Arizona Extension.

DECEMBER



ECOP National 4-H Leadership Committee supports multi-year effort to engage millions more young people in 4-H positive youth development programs.

FEBRUARY



Inaugural meeting of the Hispanic Advisory Committee at National 4-H Conference Center leads to creation of valuable resources for Cooperative Extension and 4-H community.

APRIL



White House welcomes 4-H'ers who share ways they are addressing childhood hunger with President Barack Obama and Agriculture Secretary Tom Vilsack.

JUNE



4-H Juntos program expansion underway to reach more kids in New York City, San Antonio, Texas and Raleigh, North Carolina, where the program was established.



4-H at a Glance

4-H is America's largest youth development organization – serving nearly six million kids in every county across the country. 4-H empowers young people with the skills to lead for a lifetime. That's made possible by a vast network of 110 public universities, America's Cooperative Extension System and the United States Department of Agriculture, as well as donors, 4-H professionals, volunteers, educators and alumni.



5M
SCIENCE
PROJECTS



2.5M
HEALTHY LIVING
PROJECTS



2.5M
CITIZENSHIP
PROJECTS



3,500
4-H PROFESSIONALS



562,000
ADULT & YOUTH VOLUNTEERS



25M
ALUMNI
AND GROWING

I pledge my **H** **AD** to clearer thinking,

my **HE** **RT** to greater loyalty,

my **H** **NDS** to larger service,

and my **HE** **LTH** to better living,

for my club, my community, my country

and my world. 



Table of Contents

01

2015 Timeline

02

4-H at
a Glance

05

A letter from
the Chair and
President
& CEO

06

Board of
Trustees

08

Our Focus

09

Science

11

Healthy Living

13

Mentoring

15

Citizenship

17

4-H Mall

19

4-H on
Capitol Hill

20

Legacy
Awards

21

Financials

22

Honor Roll

A Letter from our Chair and President & CEO



Very few youth-serving organizations can rival the storied history and wide-ranging impact of 4-H, America's largest youth development organization. 4-H took root more than a century ago, providing young people with the skills to lead for a lifetime. Today—in a rapidly-changing and competitive world—empowering America's kids is more important than ever.

National 4-H Council plays an essential role in supporting 4-H in partnership with a unique and innovative network that includes more than 100 leading universities, America's Cooperative Extension System and the National Institute of Food and Agriculture at the United States Department of Agriculture. We're proud to be their partner on many levels to support the 4-H program.



Council's work is focused on creating public-private sector partnerships, convening the 4-H community around important issues and telling the amazing 4-H story. In 2015, we celebrated our highest revenue year in Council history – raising nearly \$48 million. Those funds supported exciting 4-H initiatives like teen-led healthy living programs, the world's largest youth-led science experiment and programs to engage Hispanic youth and families. Our supporters—including millions of 4-H alumni—are rightfully proud of the proven impact of the 4-H experience.

We understand that America needs more young people who are engaged, prepared and qualified to take on the critical challenges facing businesses, communities, families and kids. Sadly, too many of our nation's youth lack the basic skills required to become successful and productive members of society. The numbers are sobering; half of today's youth admit they are unprepared for life after high school.

In response, Cooperative Extension's 10-year vision sets a lofty goal: to reach millions more youth with a life-changing 4-H experience—tailored to the changing demographics and diverse needs of the country. The entire 4-H community, including Council, is committed to making that vision a reality.

More than 100 years ago, 4-H was founded on a belief in the power of youth. Today, 4-H is poised to positively impact the next 100 years—by equipping America's young people with the critical skills needed to solve modern day challenges. That's a powerful story we will continue to share, one about 4-H'ers leading with confidence and curiosity, with the capability to find answers and solutions, the courage to get the job done and make sure it's done right.

Sincerely,

Alison Lewis
Chair
Global Chief Marketing Officer
Johnson & Johnson Consumer Companies, Inc.

Jennifer L. Sirangelo
President & CEO
National 4-H Council

Board of Trustees

John F. Amaya

Chief Development Officer
Lipman Produce

Tim Amerson

CEO
AgFirst Farm Credit Bank

Steve Barbarick

Executive Vice President
Tractor Supply Company

**Martha Bernadett, M.D.,
M.B.A.***

*Executive Vice President,
Research and Innovation*
Molina Healthcare, Inc.

Chris T. Boleman

Asst. Dir. & State Leader
4-H Youth Development
Texas A&M Agrilife
Extension Service

James C. Borel*

Executive Vice President
DuPont Company

Howard W. Buffett

Trustee
Howard G. Buffett Foundation

Caleb Cheng

Student
Pennsylvania State University

Joseph B. Dzialo*

President
Lee Jeans

David L. Epstein*

Principal
J.H. Chapman Group, LLC

Delbert Foster*

Vice President
Land-Grant Services
Executive Director
1890 Program
*Vice President, Research and
Development*
South Carolina State University

William Frost

Associate Vice President
Division of Agriculture
& Natural Resources
University of California

E. Gordon Gee

President
West Virginia University

Daniel Glickman*

Vice President
Aspen Institute
Executive Director
Aspen Institute
Congressional Program
Senior Fellow
Bipartisan Policy Center
U.S. Secretary of Agriculture
1995–2001

Jeffery Goodwin

Director
4-H and Youth Development
Colorado State University

Tess Hammock

Student
University of Georgia

William Hare

Associate Director
Cooperative Extension Service
University of the District
of Columbia

Landel C. Hobbs*

Board Treasurer
Founder & CEO
LCH Enterprise, LLC

Cathann Kress

*Vice President for Extension
and Outreach*
Iowa State University

Alison E. Lewis*

Board Chair
Global Chief Marketing Officer
Johnson & Johnson Consumer
Companies, Inc.

Lazarus Lynch

Student
SUNY Buffalo State

Mark Martino

Vice President
North America and Latin America
North Supply Chain
Monsanto Company

*Executive Committee

Board of Trustees

Colleen McCreary*

Board Vice-Chair

Chief People Officer
Climate Corporation

Michelle Munson

President, CEO & Co-Founder
Aspera

Javier Palomarez

President & CEO
United States Hispanic Chamber
of Commerce

Teresa Paulsen

Vice President, Communication &
External Relations
ConAgra Foods

Austin Pittman

Chief Executive Officer
UnitedHealthcare Community
& State, UnitedHealth Group

Nick T. Place

Dean for Extension & Director
University of Florida
IFAS Extension

Maggie Sans

Senior Vice President and Chief
Corporate Affairs Officer
Walmart

Kip Tom

Managing Member
Tom Farms LLC
President
CereServ, Inc.

Elizabeth Varley**

Vice President, Federal Government Relations
Ameriprise
Vice President in the Office of Government Affairs
New York Life

Ann M. Veneman

U.S. Secretary of Agriculture
2001–2005
Former Executive Director of UNICEF

Andrea Vessel*

Alumna
American University

Jennifer M. Whitlow

Senior Vice President Corporate Communications
Lockheed Martin Corporation

FEDERAL GOVERNMENT LIAISONS

Ann Bartuska

Deputy Under Secretary
Research, Education and Economics
U.S. Department of Agriculture

Muquarrab Qureshi

Deputy Director
Institute of Youth, Family and Community
U.S. Department of Agriculture/National Institute of Food
and Agriculture

Edward J. Beckwith*

Board Secretary
Partner
Baker & Hostetler, LLP

Jennifer L. Sirangelo*

President & CEO
National 4-H Council

*Executive Committee

**Special thanks to these Trustees whose terms
expired or who retired/resigned in 2015.

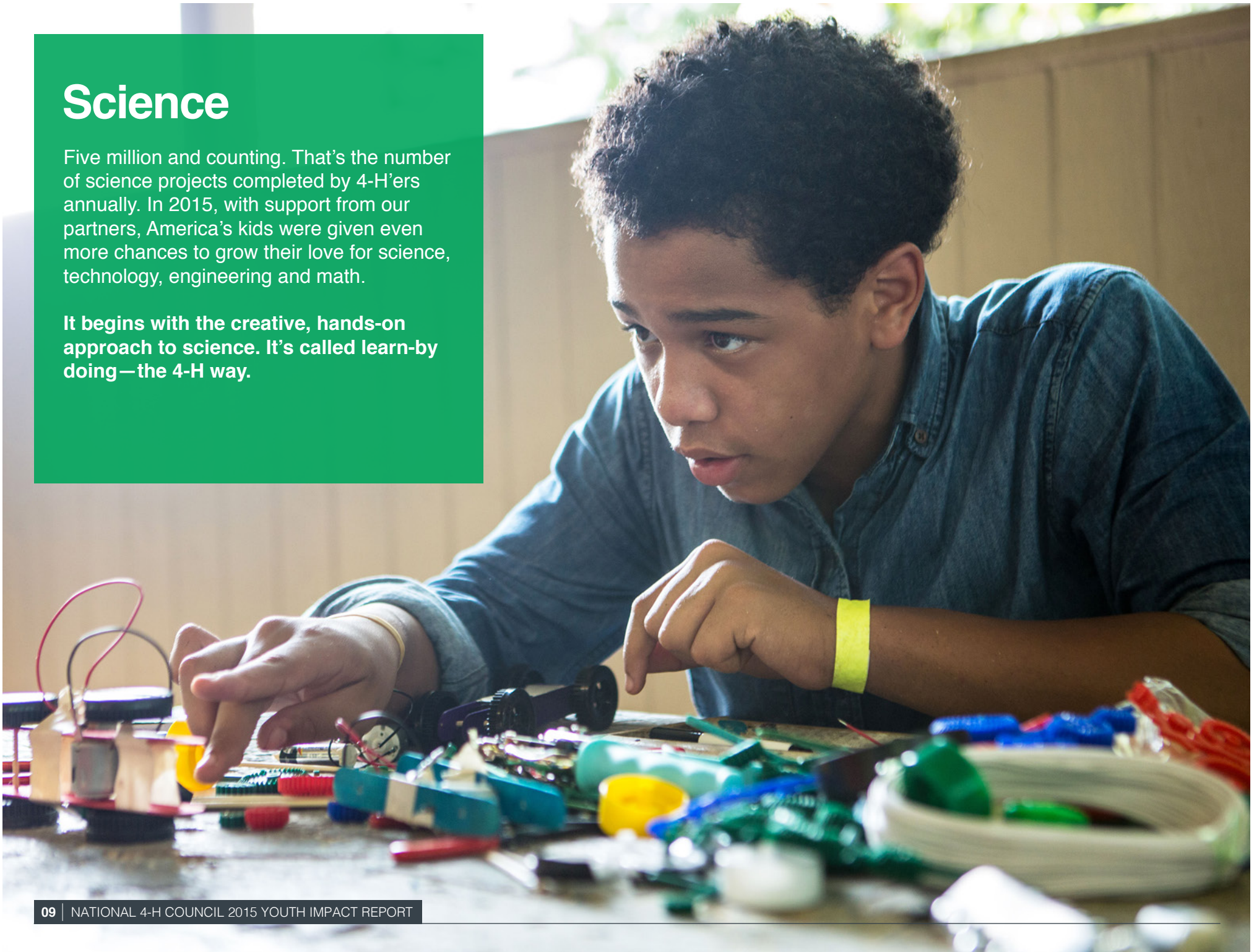
Our Focus



Science

Five million and counting. That's the number of science projects completed by 4-H'ers annually. In 2015, with support from our partners, America's kids were given even more chances to grow their love for science, technology, engineering and math.

It begins with the creative, hands-on approach to science. It's called learn-by doing—the 4-H way.



Science

HughesNet



4-H NATIONAL YOUTH SCIENCE DAY
ROCKETS TO THE RESCUE

A THE UNIVERSITY OF ARIZONA
COLLEGE OF AGRICULTURE AND LIFE SCIENCES
COOPERATIVE EXTENSION



AUGUST

Preparations are being made for the 7th annual 4-H National Youth Science Day, featuring the world's largest youth-led science experiment. Kit sales for the Rockets to the Rescue experiment, created by the University of Arizona Extension, are taking off in a significant way.



JANUARY

Hughes Net and 4-H inspire the next generation of scientists through alumni activation campaign called 4-H GROWN.

MONSANTO



MARCH

Thousands of youth discover the science behind the "Water Windmill Challenge," as part of the 4-H Ag Innovators Experience.



OCTOBER

The 7th annual 4-H National Youth Science Day is a success with an 82 percent increase in youth participation, more than 1,000 events in 50 states, live satellite broadcast across 30 markets, and a national launch event at the Verizon Center in Washington, D.C.

A THE UNIVERSITY OF ARIZONA
COLLEGE OF AGRICULTURE AND LIFE SCIENCES
COOPERATIVE EXTENSION



HughesNet



FEBRUARY

Disney doubles its investment in a 4-H program called Connecting Youth to Nature – designed for urban youth and their families.

JUNE

In the news: the innovative approach to teaching 4-H science is featured prominently in the spring issue of *STEM Jobs Magazine*.



Healthy Living

The health and well-being of America's kids is a 4-H priority. Not surprisingly, 4-H young people are leading the programs that are making a difference in the lives of families in communities throughout the United States.

Program funding and support is made possible by public and private organizations -- from major corporations and foundations to the nation's land-grant universities, Cooperative Extension and USDA.



Healthy Living ■



JULY

4-H'ers and fellow youth health ambassadors enjoy this training session, organized by Council and Walmart to support the *Youth Voice: Youth Choice* program.



NATIONAL YOUTH SUMMIT SERIES

FEBRUARY

Teams of youth and adults from across the country learn new ways to deal with the nation's health crisis during interactive National Youth Summit on Healthy Living at the National 4-H Conference Center.



APRIL

UnitedHealthcare nearly doubles its annual commitment and brings the Food Smart Families program to eight states—teaching families in high-poverty communities how to shop and cook nutritious meals on a budget.



JANUARY

ConAgra Foods Foundation renews partnership to support the 4-H Food Smart Families program – led by teens in support of families in low-income communities.



JANUARY

Nearly 16,000 4-H'ers participate in activities during the 4th annual National Drug Facts Week, which includes popular virtual talks with scientists from the National Institutes of Health.



APRIL

4-H'ers share ways they are fighting childhood hunger and rural poverty during a visit with President Obama and Agriculture Secretary Vilsack in the Oval Office.

Youth participate in 4-H National Mentoring Program through North Carolina State University Extension

Mentoring

With the help of trusted mentors, 4-H is changing and saving lives. In 2015, the 4-H National Mentoring Program supported thousands of young people thanks to Department of Justice funding and proven programs delivered by America's Cooperative Extension System.

All kinds of kids benefit from the program—from those living in public housing and detention centers to Native American youth, new immigrants and more.



Mentoring



SEPTEMBER

U.S. Department of Justice awards Council \$9.8 million (largest award to date) to support 4-H National Mentoring Program.



4-H National Mentoring Program

JANUARY

250 4-H professionals attend national training program in support of 4-H NMP at National 4-H Youth Conference Center.



APRIL

Alabama A&M University mentors, pictured here, support kids in juvenile detention facilities as part of the 4-H Life mentoring program.



OCTOBER

Congressional leaders share news of the Department of Justice grant and funding levels by state via media outlets and social media.



Extension Service



FEBRUARY

Program implementation begins locally in 46 states with support from 53 land-grant universities, including Missouri, Oregon and Utah Cooperative Extension programs of distinction.



JUNE

4-H National Mentoring Program funds support for Maryland kids living in public housing who are learning about exciting careers in STEM thanks to their creativity and trusted mentors.

Citizenship

Compared to their peers, 4-H'ers are nearly two times more likely to be civically active according to independent research. Their actions tell an even better story.

For nearly 60 years, thousands of 4-H youth have traveled to the National 4-H Conference Center, just outside the nation's capital, to learn the importance of serving their country and giving back to their communities.



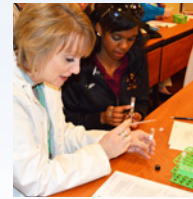
4-H'ers are all smiles as Missouri Senator Claire McCaskill takes a selfie with the high school students during a 4-H visit to Capitol Hill - Summer 2014

Citizenship



JULY

Dates for the 2015 Citizenship Washington Focus (high school students) and the new Leadership Washington Focus (middle school students) week-long leadership retreats at National 4-H Conference Center are announced.



JANUARY

Scientists, researchers and leaders in the agriculture sector partner with 4-H to host the National Youth Summit Series on Agri-Science for America's high school students.



JUNE

Thousands of young people travel to the nation's capital for Citizenship Washington Focus and Leadership Washington Focus.



NATIONAL YOUTH SUMMIT SERIES

HEALTHY LIVING · MAKER · AGRISCIENCE

NOVEMBER

National 4-H Conference Center kicks off the National Youth Summit Series with the Maker event.



APRIL

The 85th National 4-H Conference, the annual premier national civic engagement opportunity for 4-H'ers, led by USDA-NIFA, attracts nearly 250 youth to National 4-H Conference Center.



United States Department of Agriculture
National Institute of Food and Agriculture



4-H Mall

There's no other mall quite like the 4-H Mall. It's the flagship ecommerce destination for the 4-H community, where every order directly supports the 4-H mission to provide young people with 4-H high-quality programs.

There were some big wins in 2015, including a 25 percent increase in curriculum sales. Frequent shoppers had nearly 500 new items to choose from.



4-H Mall



SEPTEMBER
4-H National Youth Science Day
Rockets to the Rescue science experiment surpassed goals with 10,250 kits sold, the most ever.



JANUARY
 New 4-HMall.org interface goes live, and, in six months, sees a 12% increase in online revenue year-over-year.



JUNE
 Introduced 4-H line of Marji's FarmHer Apparel, a small business partner who has been featured in *O, The Oprah Magazine*.



Curriculum
 Affiliate



PURDUE EXTENSION

MICHIGAN STATE
 UNIVERSITY
 EXTENSION

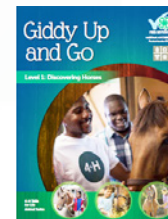
UNIVERSITY OF MINNESOTA
 EXTENSION

Oregon State
 UNIVERSITY OSU Extension Service

UNIVERSITY OF
 Nebraska
 LINCOLN EXTENSION

UNIVERSITY OF ILLINOIS
 EXTENSION

OCTOBER
 Launched Curriculum Affiliate Partner program to introduce curriculum in partnership with the universities listed to the left.



APRIL
 Largest month of sales in 4-H Mall history by 13%, driven by the popularity of newly released experiment kits and cooking, horse and financial management curriculum.

4-H on Capitol Hill

There are an estimated 25 million 4-H alumni across all areas of business, government, education and entertainment. That number includes 46 Members of Congress and 12 Governors in the United States. In 2015, Members of Congress elevated their 4-H support with the re-launch of the 4-H Congressional Caucus—an opportunity for members to stay connected with 4-H programs and participate in 4-H events on Capitol Hill.



APRIL

Nineteen Members of Congress attend the 2nd annual National 4-H Council Congressional Breakfast moderated by West Virginia University President Gordon Gee.



JUNE

Representative Chris Van Hollen (Maryland) announces the re-launch of the 4-H Congressional Caucus.



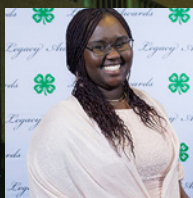
Representative Cathy McMorris-Rodgers (Washington), 4-H alumna, pictured here, received the 4-H Champion for Youth Award at the 2nd annual National 4-H Council Congressional Breakfast.

6th Annual National 4-H Council Legacy Awards

Our largest fundraising event of the year, the Legacy Awards celebrates the impact of 4-H youth and alumni. In 2015, several hundred dignitaries, community leaders, philanthropists and entertainers attended the event at the Newseum in Washington, D.C.



Javier Palomarez, president & CEO, United States Hispanic Chamber of Commerce, receives the 2015 4-H Distinguished Alumni Medallion.



New York 4-H'er, Nosa Akol, is honored with the 2015 Youth in Action award, which includes a \$10,000 scholarship.

Financials

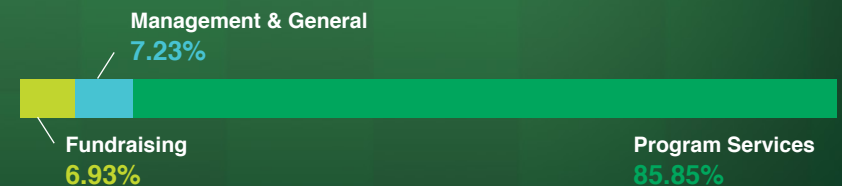
Summary Statement of Financial Position

	2014	2015
Assets:		
Cash and Cash Equivalents	3,473,748	8,657,909
Investments	14,750,845	10,163,728
Receivables	5,004,885	9,715,031
Merchandise Inventories	1,495,547	1,596,178
Property and Equipment, Net of Depreciation	8,962,084	8,442,821
Other Assets	126,660	255,855
TOTAL ASSETS	33,813,769	38,831,522
Liabilities:		
Accounts Payable and Accrued Expenses	4,238,946	4,810,146
Line of Credit	675,000	-
Deferred Revenue	1,130,551	1,304,675
Accrued Postretirement Benefit Liability	2,782,936	2,782,936
Unfunded Pension Liability	2,985,711	2,909,535
Agency Funds and Other	852,217	1,248,103
TOTAL LIABILITIES	12,665,361	13,055,395
Net Assets:		
Unrestricted Net Assets		
Undesignated	536,445	4,082,862
Designated	6,263,895	4,014,942
TOTAL UNRESTRICTED NET ASSETS	6,800,340	8,097,804
Temporarily Restricted Net Assets	14,112,671	17,442,926
Permanently Restricted Net Assets	235,397	235,397
TOTAL NET ASSETS	21,148,408	25,776,127
TOTAL LIABILITIES AND NET ASSETS	33,813,769	38,831,522

Summary Statement of Activities

	2014	2015
Revenue:		
Contributions and Grants	21,927,247	31,059,218
National 4-H Youth Conference Center	10,887,067	10,348,562
4-H Mall	4,639,365	4,705,234
Investment Income	682,188	684,996
Other	586,472	1,147,747
TOTAL REVENUE	38,722,339	47,945,757
Expenses:		
Program Services	39,010,724	36,341,559
Management and General	3,029,211	3,059,497
Fundraising	3,766,727	2,932,460
TOTAL EXPENSES	45,806,662	42,333,516
<small>BEFORE INVESTMENT GAINS / (LOSSES), PENSION COSTS AND POST-RETIREMENT BENEFIT COSTS</small>		
Investment Gains/(Losses)	1,823,004	(486,075)
Pension Related Changes other than Net Period Pension Costs	769,128	(498,447)
Postretirement Benefit Costs	17,089	-
CHANGE IN NET ASSETS	(4,475,102)	4,627,719

2015 Expense Components



Honor Roll

National 4-H Council's work of behalf of the 4-H Youth Development movement would not be possible without the generosity of our individual, corporate and foundation donors. Thank you. Listings with a "◇" are gifts committed in a prior reporting period that continue to support Council's work.

SECOND CENTURY OF EXCELLENCE CLUB Corporations and Foundations July 1, 2014–June 30, 2015.

EMERALD CLOVER \$1,000,000 AND UP

Altria Group, Inc. (FY 2015, FY 2014, FY 2013) ◇
Bill and Melinda Gates Foundation (FY 2012) ◇
ConAgra Foods Foundation (FY 2015, FY 2014) ◇
DuPont Company (FY 2013) ◇
Lockheed Martin Corporation (FY 2015, FY 2012) ◇
Monsanto Company (FY 2014) ◇
New York Life Foundation
The Noyce Foundation
Tractor Supply Company (FY 2015, FY 2014, FY 2013) ◇
UnitedHealthcare (FY 2015)
Walmart Foundation (FY 2014) ◇

PLATINUM CLOVER \$250,000–\$999,999

AARP Foundation (FY 2014) ◇
CME Group (FY 2014) ◇
Coca-Cola North America (FY 2013) ◇
The Walt Disney Company (FY 2015, FY 2014) ◇
DuPont Company
Hughes Communications Inc. (FY 2015, FY 2014) ◇
S. D. Bechtel, Jr. Foundation
UnitedHealthcare (FY 2014, FY 2013) ◇
U.S. Cellular

GOLD CLOVER \$100,000–\$249,999

AARP Foundation (FY 2013) ◇
AT&T Foundation (FY 2013) ◇
CME Group
DuPont Company (FY 2014) ◇
Farm Credit (FY 2015, FY 2014) ◇
Howard G. Buffet Foundation (FY 2012) ◇
John Deere (FY 2014) ◇
Molina Healthcare, Inc. (FY 2014, FY 2013) ◇
Motorola Solutions Foundation (FY 2014) ◇
The Noyce Foundation (FY 2014) ◇
Philips North America (FY 2014) ◇

SILVER CLOVER \$50,000–\$99,999

Bayer CropScience
Bill and Melinda Gates Foundation (FY 2014) ◇
Espree Animal Products
Monsanto Company
Motorola Solutions Foundation
Tata Consultancy Services

BRONZE CLOVER \$25,000–\$49,999

Autodesk, Inc.
Coca-Cola North America
JCPenney Cares (FY 2014) ◇
Johnson & Johnson
Merck Animal Health (FY 2014) ◇
Molina Healthcare, Inc.
Strategic Staffing Solutions
VF Jeanswear

GREEN CLOVER Up to \$24,999

4-H Extreme Team
ABM Janitorial, Inc.
Active Network, Inc.
Adobe
AGCO Corporation (FY 2014) ◇
AmazonSmile Foundation
Ameriprise Financial
The Andersons Inc. Charitable Foundation
API
University of Arkansas Cooperative Extension
AT&T Premier Client Group
ATK Federal Cartridge Company
BakerHostetler
BB&T
Belcan Corporation
Brandywine Cloverleaf 4-H Club
Buckhorn, Inc.
Bucks Clucks 4-H Club
Calibre CPA Group, PLLC
Charity Gift Certificates
Clay County 4-H Club Council
The Context Network
Custom Metal Fab W. Soule
Dailey & Associates
Dana Foundation
The Dickson Foundation, Inc.
Eurest Dining Services
Evans County Extension and 4-H
Fillmore Container, Inc.
First Western Trust
FirstPic Consulting, Inc.
Florida 4-H Club Foundation, Inc.
Fort Valley 4-H Club

Honor Roll

From the Heart Enterprises, Inc.
FrontStream Workplace Philanthropy
Georgia 4-H Foundation
Great Plains Industries, Inc.
GSD&M
Harper Livestock
Hecla Greens Creek Mining Company
Hodgdon Powder Co. Inc.
Hornady Manufacturing Company
IEWC
IQ Solutions
Iron County 4-H Sharpshooters
Ironmark USA
Kelly Benefit Strategies
Lipman Produce
LMEPAC Charity Match Program
MEC Global
Merck Animal Health
Missouri 4-H Foundation
National Wild Turkey Federation, Inc.
The Ohio State University Extension
The Parks Companies
Pfizer
Philips North America
Pledgeling Foundation
PNW Select
Precision Agricultural Services, Inc.
Quad/Graphics, Inc.
Reagent Chemical & Research, Inc.
Robert Wood Johnson Foundation
Safari Club International Foundation
Israel Montalvo and Debra Hoffman Montalvo
Charitable Fund at Schwab Charitable
Sexton Water Treatment
SilverStone Group, Inc.
Social Capital Partnerships
TisBest Charity Gift Cards
United Business Technologies
United States Hispanic Chamber of Commerce
Virginia Tech

Vista Outdoor Sales, LLC
Weaver Bros. Insurance Associates, Inc.
Weaver Leather
Wells Fargo & Company
WM Velveteen 4-H Club of Passaic County

SECOND CENTURY OF EXCELLENCE CLUB

Individual Donors
July 1, 2014 - June 30, 2015

PRESIDENT'S CLUB Individual Donors

Special appreciation for those individuals who have contributed \$25,000 or more during their lifetimes in support of National 4-H Council and its programs.

Anonymous (2)
Roger C. Beach
Drs. Martha and Faustino Bernadett
Jim Borel
Gary and Trudie Davis
Joseph and Leslie Dzialo
David and Paula Epstein
Don and Carolyn Floyd
Robert B. and Barbara Gill
Susan W. Halbert
Ken and Lucy Hicks
Ralph W. Ketner
Mr. and Mrs. William A. Linnenbringer
Lockheed Martin Employee Giving
Mr. and Mrs. William G. Lowrie
Colleen Wheeler McCreary
Michelle Munson and the Serban Simu Family
Elaine R. Pitts
Larry and Brenda Potterfield
Richard J. and Elizabeth L. Sauer
Sharon Schainker
Grant and Alma Shrum
Jennifer L. Sirangelo

Gene and Sharon Swackhamer
Mr. and Mrs. Lawrason Thomas
James P. Tobin and Virginia E. Heagney
The Omer G. Voss Family Foundation

EMERALD CLOVER \$10,000 and Up

Anonymous
Drs. Martha and Faustino Bernadett
David and Paula Epstein
Lockheed Martin Employee Giving
Michelle Munson and the Serban Simu Family
Plex Systems Employee Giving Campaign
In Memory of Kent and Caroline Ringo
Estate of Justus W. Seaman*
Elizabeth N. and William R. Sheldon*
Gene and Sharon Swackhamer
Edward R. Tinker* Charitable Trust

PLATINUM CLOVER \$5,000–\$9,999

Jim Borel
Joseph and Leslie Dzialo
K. Denise Grant
Landel C. Hobbs
Mr. and Mrs. William A. Linnenbringer
Colleen Wheeler McCreary
Teresa Paulsen
Austin Pittman
Jim Rutledge
Bo and Becky Ryles
Jennifer L. Sirangelo

Honor Roll

GOLD CLOVER **\$1,000–\$4,999**

John Amaya
Tim Amerson
Anonymous
Caleb K. Cheng
Stephen D. Barr
Scott and Jill Bramble
Gary and Arlene Deverman
Ms. Charlotte Eberlein
Heather and Jon Elliott
Andy and Deb Ferrin
Don and Carolyn Floyd
Dorothy McCargo Freeman
Nathan Friedman
Janet and James Golden
Jeffery and Donna Goodwin
Kathy Hammock
Puff Hampson
Lynn Henderson
IBM Employee Charitable Contribution Campaign
Dr. Edwin and Laura Jones
Paul and Susie Koehler
Alison Lewis and Family
Lori Melichar
Ron Oved
David E. and Valerie Halverson Pace
Dwight and Twila Palmer
Nick T. and Debbie Lynn Place
Richard J. and Elizabeth L. Sauer
Melvin R. & Irene M. Sheffer* Trust
Grant and Alma Shrum
Artis Stevens
James P. Tobin and Virginia E. Heagney
Kip Tom
Eleanor L. Wilson
Mary Lee Wood

SILVER CLOVER **\$500–\$999**

Oliver C. Anderson
Samuel B. Baker
Mr. and Mrs. Edward J. Beckwith
Mark and Nadine Berkowsky
Elizabeth A. Birnstihl
Kenneth and Mary Bolen
Cherryll B. Bowman
Dave J. Brewer
Kate Caskin
Timothy J. Dalton
W.H. and Margaret Anne Elkins
Gary S. Findley
Gail and Ed Gershon
Secretary Dan Glickman
Daniel D. Godfrey
Alene D. Haines
Randall Hammock
Kevin and Sara Huber
Betsy and Jerry Johnson
Mr. and Mrs. Norman Johnson
Alberta B. Johnston
Cathann Kress
Sandra Link Lignell
Mr. and Mrs. F.A. Lowrey
Hemant Makhija
Ellen Markowitz
Mark Martino
Jennifer Z. McIver
Maria A. McNeely
Kandy K. McWhorter
Dr. and Mrs. Robert H. Miller
William and Anita Million
Mr. and Mrs. H.B. Pasley
Isaac Paterniti
Joe Roche
Christopher Rork
Daniel L. Schadler

Jason Schroeder
Ruth Schulz
Craig J. Shuba
Douglas L. Steele, In Honor of Dr. Elbert Dickey
Sara Sutalo
Thomas Tate
Linda Jo Turner
Cozetta and Samuel Vessel
James G. and Loretta M. Walls
Lowell H. Watts
Jennifer M. Whitlow
Michael Williams

BRONZE CLOVER **up to \$499**

Arlene Seidel Abrams
David and Evelyn Adams
Robert Adams
Joan and Richard Ahrens
Christina Alford
Violet Allain
Randy Allen
Owen D. and Diane E. Ambur
Sherry Anast
Beverly J. Andersen
Karen Andersen
Louisa G. Anderson
Dr. Sharon Anderson
Brenda J. Anding
Cynthia Andrews
Jane Angelich
Lonny Anger
Rosemary Adu
Anonymous (7)
Virginia Tomasulo Anthes
Thomas D. Archer
Gene C. Armacost
Jeff Armstrong
Dan and Susan Arnholt

Honor Roll

Conrad Arnold
Vicki Gimlin Ashley
Kirk Astroth and Tana Kappel
AT&T Employee Giving Campaign
Barbara Austin
Ms. Holly Axtell
Adrienne Babcock
John F. and Beatrice H. Bagby
Clark Bailey
Louise H. Bailey
Shanda Bandi
Harold K. Bandy
Mr. and Mrs. Perry S. Banks
Steve Barbarick
Mr. and Mrs. Steven R. Barbour
Roger E. Barrows
Jim and Carolyn Barthel
Marg Bartosek
Bernadette Basiel
Karen Bassford
Kathryn Battaglia
Ceo E. Bauer
Micheal F. Bauer
Jennifer Beaufort
Charlene Belew
Sarah Bell
Carol Benedict
Max Benne
Gail Hamilton Berardino
Yohannes Berhane
Mary L. Berning
Best Buy Employee Giving
Bruce H. Beveridge
Mrs. Helen A. Biever
Terry Billen
Albert and Barbara J. Bishop
Robert Bitz
Jason Black
Lynette Black
Melinda Blakesley

D. L. Blevins
Priscilla Blossom
Chris Boerboom
Joan Lorna Pierce Boewe
Christopher T. Boleman
Ralph Booker
Robert R. Boone
Dr. Cheri Booth
Crystal Borelli
Connie Boshers
Eric S. Boucher
Gary and Mary Beth Bowman
Dr. and Mrs. V. Milton Boyce
Pat BoyEs
Gary D. Brandt
Ronald Braselton
Leigh Ann Braswell
Drs. William J. and Bonnie Braun
Mari V. Bray
Reverend and Mrs. Michael R. Brendle
Herbert D. and Mary Lou Brewer
Catherine Broadhead
Lynne Brock
Neil Broesch
Tracy Brooks
Daniel Brown
Mr. and Mrs. Jason McKay
Emory Brown
Ethan Brown
Jennifer Brown
Lynn and Marjorie Brown
Nettie Ruth Brown
Janice and Paul Brown
Ronald Brown
Daryl and Joyce Buchholz
Marcia K. Buchs
Howard W. and Lili Buffett
Roger P. Buffington
David and Nancy Bull
Lindsay Burnett

Elizabeth Burney
Bonnie E. Burr
Dorothy and Edward Buss
Gwendolyn Butler
Marty and Elna Butterfield
Nicole Butz
Scott Byers
Joel Caballero
Mike and Charlene Cain
Robert Call
David Campbell
Jim and Kay Campbell
Kirk Campbell
Brian Caramello
Elizabeth Caramello
Charles R. Carmichael
Cecilia Case
Amy Casey
Mrs. Elaine D. Cassel
Ujin Chang
Hebra (Fink) Chapman
Bin Chen
Maria Choi
Robert and Carol Christensen
David S. and Laura L. Chu
William F. Church
Sarah Chvilicek
Clarissa Cincotta
Dr. Carolyn Clague and
Mr. Dennis Hopfinger
Barbara, Charles, and Taylor Clark
Donald J. Cleary
Anner Clemons
Allie Click
Rachel Close
Amanda B. Clougherty
Natalie and Perry Cobb
Charlotte and Ronnie Coffman
Kristofer D. Coffman
Faye F. Cohen

Anna and Charles Cole
Richard Colvert
Cheryl Comins
Beth Conder
Carolyn Zehner Condorodis
Elaine M. Coney
Cindy Connolly
Dr. Anne Looney Cook
Joe Cope
Patricia Corley
Susan Craft
Brett Cramer
Elaine R. Cranford
Rochelle Creighton-Tompa
Beth Crider
Tim L. Cross
C. Douglas and Karen Crouse
Justin Crowe
Berri Culliton
Merrilyn N. Cummings
James C. Curtis
Maureen F. Daley
Mitchell Daniels
Tania Butler Davis
Jacqueline Davis-Manigaulte
Christina Day
Lawrence Degan
Asha Maskiell Demarsh
Dr. and Mrs. Leon G. Devlin
C. Joseph and Linda Diamond
Courtney Dickinson
Rebekah Dietz
Larry Dilda
Susan Dillard
Joseph J. Donegan
Scott Dougall
Jim Douglas
Ronald C. and Phyllis Drum
Mari Duchaj
Carolee R. Duckman

Honor Roll

Jessica Dudley
Daniel L. Duncan
Andrew J. Duncelman
Beverly R. Durgan
Todd Eads
John and Anne Edgecomb
Rosemary Edwards
David Eisenberg
Geraine Eisentraut
Adaku Uche Ekpo
Paul Eldridge
Marion J. Eller
Ellen P. Elliott
Charles E. Elson
Norman and Cynthia Engelbrecht
Kate England
Mary Ann and Robert Espeseth
Margaret and Don Eutenier
Exelon Employee Giving Campaign
Ronald F. Fairbrother
Dr. and Mrs. Chester P. Fehlis
Frank and Judy Fender
Matt Fennel
Joseph Ferguson
Matt Ferguson
Anthony and Carolyn Fernandez
Betty Fewell
Donna Finnie
Kristi Fischer
Steven Fisher
Connie Fitzgerald
John Fitzgerald
John N. Flanders
Paula J. Florkey
Delbert T. Foster
Dr. and Mrs. Richard E. Fowler
Trish Frazier
Whitney Friesen
William Frost
Lydia and Wessen Furomoto

Shawn Garner
Denise C. Garrett
Maureen Garrett
Ashlea Gastel
Dr. E. Gordon Gee
Julie Drozd Gennaro
John and Susan Gephart
John and Anne Gerwig
Alan R. Gilbert
Robert Glover
Hank and Janet Godby
Shuchita Goel
Griffin Gonzalez
Ed Gorman
Mark Goth
Stephanie Gourley
Mr. and Mrs. Loren Goyen
Judith Green
Chester Greene
Katie Greene
Melanie Gregory
Billie J. Griffin
Jim Griffith
Peggy and Jim Grillo
Judy Griswold
Mrs. Helen K. Groves
Patricia R. Dawson Gruber
Ken and Mary Gumaer
Donald Guske
Marjorie Guyler-Alaniz
Mary Beth Haan
Norma Haas
Denielle Haines
Augustus Hall
Lois Elaine Hall
Chris J. Hamilton
Timothy Hammerich
Deborah Hammock
Tess Hammock
Zak Hammond

Don and Lorraine Hand
E. Carl Hanks, Jr.
Reiny and Ramona Hanneken
Dr. William W. Hare
Harold and Judy Harper
Erica Harris
Robin Harris
Margaret A. Hart
Holly Hastings
Dawn Hatch
Edwin N. and Pamela A. Hathaway
Janet Healy
Dick and Gerry Heavner
Beth and Aaron Hecht
Rebecca H. Heckler
Mr. and Mrs. Richard Hedke
Zane R. Helsel
Caroline Helwick
Ryan Hensley
Alvin and Phyllis Hepner
John and Bernice Hibbard
Charles Hibberd
Analine S. Hicks
David C. Hill, Ph.D.
Ollie and Joyce Hill
Sara Hill
Drs. Janet and Larry Hiller
Kristin Hiller
Linda M. Hiltabrand
Elizabeth Hines
Michael Hines
Patricia Hinkle
Kimberly Hinze
Carrie Hobgood
Anita Hollmer Hodson
Jeffrey Holland
Charles M. Holmes
John R. Holmes
David Holt
Merrie Holtan

Roy and Patricia Hougen
Mike and Lyla Houglum
Jeff W. Howard
Ginny Howell
Becky Hubman
Sara Hudak
Vanessa Hunnibell
Gerald and Mary Ann Hunnicutt
Jennifer M. Hunt
Dr. and Mrs. Theodore Hutchcroft
Deidre Iciek
Helen F. Ilnicki
Michelle Imhoff
Kathleen Inderbitzen
Elaine Jackson
Michelle Jackson
Casey Jarding
JCPenney Employee Giving
Josette Jean-Francois
Mr. and Mrs. Clifford A. Jenkins
Ted and Barbara Jenkins
Johnson & Johnson Employee Giving
Adam Johnson
Eric F. Johnson
Grace Johnson
Heather Johnson
James E. Johnson*
Larry and Shirley Johnson
Laura P. Johnson
Matthew Johnson
Ralph G. and Ruth Caven Johnston
Hilbert and Kathleen Johs
E. D. Jones
Lawrence K. Jones and
 Jeanine Wehr Jones
Mrs. Jean Howington Jordan
Kinetra Smith Joseph
Robert Juba
Mark Jung
Rachelle Kagen

Honor Roll

Thomas Kaplan
John Karels
Wendy Kaysen
James and Linda Keane
Elizabeth Kelley
City of Kentwood MI
Kyle Kerns
Marianne Kerr
Blair Kersenbrock
Gerald M. Killigrew
Joan Kimber
Beverly J. Kimble
Megan S. King
Tamela Kinsey
Flora E. Kitzman
Laurie Kleen
Dan Klingenberg,
In Memory of Sue Fisher
Steven K. Knapp
Linnaea Knisely
Richard and Lynne Koehler
Melissa Koller
Ann Korschgen
Cleo Kottwitz
Richard and Janet Kriebel
Larry L. Krug,
In honor of Jean Cogburn
Charles W. and Beverly J. Kruse
Michael Kucsma
Diane LaCumsky
Eric Lakness
Guadalupe Landeros
Max M. Landes
Grace Lang
Donna Langner
Willie and Arlene Lantz
Jane Kamisato Larson
John Lata
Cate Laughlan
Al Laven

Reverend Paul and
Jo Anne Leatherman
Teresa LeGrand
Charlotte and Bruce Lehmann
Elaine Leibsohn
Pat Leslie
Mark Levine
Noah Levy
Seth Lewis
Terry Lewis
Carol Leybourn
Lawrence H. and Susan L. Liden
Charlene Lind
Leland L. Lindquist
Rainy Linn
Ms. Ina M. Linville
Robert J. Livermore
Ann Losee
Maxey and Julia Love
Ruth Luedtke
Kristina M. Lybecker
Flower and Glenn MacMillen
Paula Madrigal
Debbie Mahony
Francis S. Mansue
Arlene H. Manthey
Jody Marchand
Brett Marchbanks
Dr. Pamela A. Marino
Jerry L. Mark
Ron and Ann Marlow
James W. Marquand
James Marston
Dorothy H. Martin
Kim Martin
Nick Martin
Bob Mattei
Daniel Mattos
Katherine Mattson
Marilyn L. Mause

Debra L. Maynard
Mary and Ray Maynard
Jim and Mary McAuslan
Gena M. McClain
Joan and Daryl McClure
Mrs. Terryann G. McCoy
Jeff and Jacque McCullough
Sarah McDonald
Joseph B. McGuire
Renee K. McKee
Kim McLeod
Lois McNamara
Terry McNew
William McVay
June P. Mead
June Meade
Anna Mekjian
Paige Merriam
Mary Kaye Merwin
Mettler Farms Inc., Dennis L. Mettler
Ben Meyer
Marilyn R. Meyer
The mGive Foundation
Jaime Michaelson
Gwendolyn J. Michalek
Kenneth and Nancy Migchelbrink
Daniel R. Miller
Lucinda Miller
Thomas and Donna Miller
Megan Millsap
Kate Mindrum Hill
Sally Miske
Danelle Mitchell
Linda Mooneyhan
Barbara Moore
Bill and Sally Moore
Erin Morgan
Talia Morgan
Walter and Donna Morton
Dr. and Mrs. Howard Moses

Ellen Motley
Curt and Alisha Mueller
Heidi Mulling
William and Amy Murdie
William Myers
Sundar Mylapore
Claire Nakatsuka
Mr. and Mrs. Irvin S. Naylor
Suzie Naylor
Angela M. Neal
Joyce K. and Ralph E. Neill
Parvoneh Neilsen
Carl and Pat Nelson
New York Life Employee Giving
Angela Newby
Nancy Newman
Doug Newton
Raymond E. Nickels
Mary Niemeier
Grace E. Niemiec
Drs. Wayne and Linda Nierman
Marilyn Nordby
Fay Northrop
Peter Novak
Reagan Nunnally
Cathy O'Connor
Colleen O'Hagan
Allen and Janice O'Hara
Patrick and Melinda O'Neil
Cassandra O'Rourke
Michael Oak
Rudy Oeftering
Keith and Doris Olsen
Karen A. Olson
Norma Jean Olson
Natalie J. Oppel
Conrad and Anne Ormsbee
Dr. and Mrs. William R.
Oschwald
Henry Ostaszewski

Honor Roll

Bev Osterberg
Francine Padgett
Terri Palmer
Fan Green Panton
Bryne H. and Dr. Sandra S. Parker
Dorothy Stewart Parker
Teresa Parker
Cynthia Patterson
Jerrilyn D. Pease
Lew and Donna Pence
Becky Perkovich
Rashida Petersen
Meghan Peterson
Jeremy Pettinato
James Phelps, Jr.
Nedelka Phillips
Jean R. Pierce
Anita Pisani
Joseph Plaksa
Robert A. and Vickie Powell
Rudolph and Hattie Powell
Rod and Julie Pribyl
Katie Putnam
Robert Quinones
Heidy Ramanata
Daniel Ray
Carlton Recher
Kane Reeves
Helen Reglado
Paul E. Reichart
Kathleen and Tom Reichenberger
Tracy and Barb Remy
Bobbie Richardson
Allen and Donna Ricks
Bill and Erma Riley
Patricia Rinehart
Earl Robbins
Tina Roberts
LaNeale Robertson
Steve and Pat Robertson

Andrea Rogers
Carolyn Rogers
Tom Roney
Honea Rothermel
Joan Dean Rowe, DVM and
Charles W. Rowe
Nancy Rucker
Mr. Henry A. Rueden
Joshua Ruedin
Carolyn M. Rundell
Mr. and Mrs. Joseph L. Runyon
Sean Russell
John Rutledge
Alice A. Rybak
Danelle Sabathier
Joseph Sadusky
Barbara W. Salyers
Orion C. Samuelson
Marion W. Sandell
Jakob Sanders
Cameron Sanford
Carole Santer, NH Cluckers 4-H Club
Sheri Sargent
Steve Sass
Lucinda Saxon
Luke Schiferl
Allaire Schlicher-Beutner
Dwight and Barbara Schmidt
Mr. and Mrs. Walter E. Schmidt
James W. Schmitt
Leonard J. Schmitt
Don and Jane Schriver
John Schriver
Kristen Schultz
Judith Schulz
Michelle Schwartzhoff
Nicholas Sciarrotta
Chris Scott
Dr. Craig Scott and
Dr. Laurie Lewis Scott

Colleen and Dale Scoville
Elizabeth Searle
Sheri L. Seibold
Jerry Self
Michael and Jacqueline Setera
Amy Shapiro
Janice L. Shelton
Robin L. Shepard
Dan and Jody Sherman
Mollie Sherman
Daniel Shiloh
John W. Shishoff
Leslie Shoemaker
Donald and Deborah Showalter
Paul Siebols
Judy Timpe Siegmund
Mary Ann Sievers
Sonya Sigler
Cecil Simmons, M.D.
Tonya Simmons
Stephanie Simpson
Linda Singletary
Jennifer Sippel
Ashley Siskey
Marcele Barelman Skelton
Michelle Skinner
Megan Sly-Schueck
Ella F. Smart
Burr Smiley
Arch D. Smith
Claudette Smith
Dinky Smith
Mrs. Joan B. Smith
Keith L. and Kathleen C. Smith
Lauren Smith
Martha A. Smith
Michelle Smith
Natesha Smith
Nelwyn O. Smith
Robert Smith

Honor Roll

Todd G. Smith and Rebecca A. Smith
Mr. and Mrs. Walter K. Smith
William Smith
Stephen Snyder
Jerry Sorrels
Col. Covert A. Soulé, Jr.
Sandra Spalla-Ferree
Janice Hardy Stanley, In Memory of L. Beryl Hardy
Betsy Stefany
Brandon T. Stegall
Wanda Brewer Stephens
Aggie and Andrew Stephenson
Bear Stephenson
John C. and Nancy C. Sterling
Jeffrey and Sandra Stewart
Joe Stewart
Larry E. Stewart
Ginger Stieber
Robert Stodola
Margaret R. Stricker
Barbara Strickland
Simon Su
Karen Surber
Michelle Suroviec
John Sutphin
Mr. Martin E. Swanson
Mark Tassin
Dr. Michael J. and Winifred Ann Tate
Will Tate
W. Stephen Taunton
Kathy Temple
Jessica Thibodeaux
Anna Thomas
Audra Thomas
Marcia Thompson
Robert L. Thompson
T. T. Tyler Thompson, O.D.
Dr. E. Thomas and Mrs. Beverly J. Thurber
Michael J. Thursam
Diana Tolladay

Edward Tracey
Nelson Trickey*
Mr. and Mrs. Doug Triplett
Tammy L. Tuley
Michael and Barbara Turell
Andrew S. Turner
Barbara Turner
Jack and Helen Tyree
Betsy Ullrich
Nancy E. Umbreit
Matt Unger
Michelle Vail
Pamela Van Horn
Carol Ann Van Wyk
Jennifer Vazquez
Ann Veneman
Mary Ann and Mel Vineyard
Teresa Voise
Robert & Marcia Voss
Mr. and Mrs. Melvin H. Voyles, Jr.
Steven D. Wagoner
Carmen R. Walgrave
Elizabeth Walker
William Wallace
Janelle Walters
Marjorie Walton
Kamille Warren
Thomas Warren
Janice Washington
Jessica Webster
Judith Weiss
Sharon Wellmann
John and Kendra Wells
Sushil Dulai Wenzholz
Steen G. Westerberg and
Nancy M. Westerberg
Beth Wheeler
Glen and Darla Whipple
Mrs. Ruth B. Whipple
Jim and Joanne Widmaier

Rebecca Wilkins
Christine Willett
Ben Williams
Mary Williams
Susanna Williams
Dianna Williamson
Melissa Willis
Mr. Rance Willis
Nancy Wills
Jessica Wilmoth
Michelle Winsett
Madeleine Greene Wojciechowski
Meyer J. Wolin
Anne S. Woodhams
Allen Woodward, Jr.
Dale Wright
Pat Yearian
Michael J. Yoder
Bill and Elaine Young
Steve Young
Mary K. Zane
Leon and Eileen Zebroski
Jessica Ziehm
Amy and Harry E. Zielke, Jr.

Honor Roll

EXTENSION DIRECTORS/ADMINISTRATORS

Dr. Chris Boerboom	North Dakota State University
Dr. Ronald Brown	Association of Southern Region Extension Directors
Dr. Daryl D. Buchholz	Kansas State University
Dr. Nancy H. Bull	Northeast Cooperative Extension Directors
Dr. Tim L. Cross	The University of Tennessee Cooperative Extension Program
Dr. Beverly R. Durgan	University of Minnesota
Dr. Charlotte Eberlein	University of Idaho
Mr. Delbert T. Foster	South Carolina State University
Dr. William Frost	University of California
Dr. William W. Hare	UDC Cooperative Extension Service
Dr. Lyla E. Hougum	Western Extension Directors Association
Dr. Edwin J. Jones	Virginia Tech
Dr. Cathann Kress	Iowa State University Extension
Dr. Nick T. Place	University of Florida
Dr. Robin L. Shepard	North Central Cooperative Extension Association
Dr. Keith L. Smith	The Ohio State University
Dr. Douglas L. Steele	Texas A&M AgriLife Extension Service
Dr. Glen Whipple	University of Wyoming Cooperative Extension Service

STATE LEADERS

Tom Archer, Ph.D.	The Ohio State University
Dr. Kirk A. Astroth	University of Arizona
Dr. Chris T. Boleman	Texas A&M AgriLife Extension Service
Dr. Patricia BoyEs	Washington State University
Ms. Bonnie E. Burr	University of Connecticut
Mr. C. Douglas Crouse	University of Delaware
Dr. Dorothy M. Freeman	University of Minnesota
Dr. Jeffery Goodwin	Colorado State University
Dr. Jeff W. Howard	University of Maryland Extension
Ina M. Linville, Ph.D.	University of Missouri
Dr. Renee K. McKee	Purdue University
Ms. Claire Nakatsuka	University of Hawaii
Dr. James A. Rutledge	Oklahoma 4-H Foundation
Arch D. Smith, II	University of Georgia
Dr. Mark Tassin	Louisiana State University
Mr. Andrew S. Turner	Cornell University - Cooperative Extension Service
Dr. Michael J. Yoder	North Carolina State University

Honor Roll

WORKPLACE DONATIONS

We extend our gratitude to the donors listed below who have given to National 4-H Council through the Combined Federal Campaign, United Way Charitable Campaign, and other state and private workplace giving programs.

Jesse Alvarez
Stuart A. Anderson
Amy L. Bailey
Laura E. Beal
Jonathan Bowman
Lt. Col. Robyn M. Burk, USAF
Mark Busman
Scott Carpenter
Cindy L. Caughman
Chad N. Cieloncki
Stefanie Costello
Kathy Crofts
Donald C. Dittus
Rocquel Douglas
Daniel L. Duncan
Sheila Dvorak
David B. Dye
Marci Dyer
Marc Edmondson
John M. Falciano
LeAnne Fischer
Andrew M. Fisher
Kimberly D. Frisco
Pamela J. Furrer
Justin Garner
Suzanne M. Gay
Jennifer K. Gold
Kevin R. Golinghorst
Russell T. Hale
Janice M. Hamby
Ashton L. Hargrave

Michael Hawkins
John Heckmann
Bonnie Heppard
Michael S. Hinkle
Tabatha Hoesch
Jeffrey L. Hoffman
Walter T. Horikawa
Mary King Hornback
David L. Jones
Jennifer Kane
Sara J. Kerkhoff
Sandra Kish
Sarah Kliethermes
James J. Kostyrka
Brian Kroll
Betty A. Kunkel
Robert Lamothe
Tesa L. Lanoy
Quincy Lawson
Jeffery Malcolm
Julie W. Manico
David Martens
Tasha A. Mashburn
Sandra Maynard
Marsha Mays
Crystal E. McAbee
William McWilliams
Gregory A. Miller
Kimberly Mitzner
Pamela G. Mongan-Taylor
Jordan Morris
William Murray
Joie Navarrete
Leiann Nelson
Nelson E. Ogert
Kevin Oleen
Benjamin Orndorff
Kenneth L. Ortberg
Jakeila K. Owens
Ann B. Pasalic

Dawn Petraitis
Amy Raab
Karen E. Rabenstein
Ian C. Ray
Tiffany Reeser
Crystal Robinson
Ryan L. Rose
Stephanie Russell
Amy Schulz
Marcia S. Scott
Aileen G. Sedmak
Renee C. Seymour
Michael Shaw
Cathea Simelton
Nathaniel Skinner
Michael Smith
Ywakita S. Smith
Marcia S. Sonon
Tonya R. Summers
Lynn Sunderman
Paul J. Taylor
Robin L. Taylor
Mary J. Thomas
Robert C. Thornton
Nancy Troiano
Tracy L. Vanderham
Robert D. Wallace
Valene Waskow
Rhonda Watchey
Duncan Watt
John H. Wells
Clay Matthew West
Drew C. White
Jennifer M. Whitlow
Miranda V. Williams
Jessica F. Wills
Marilyn Jeske Wilson
Mary Louise Wotring
Peter Wright
Yvonne F. Yoerger

Honor Roll

IN-KIND DONORS

Farm Credit
Henderson Communications, LLC
James R. Kahler
Merck Animal Health
Microsoft Store - Bethesda
Monsanto Company
Richard W. Moses
R Daniel Lindquist Art Restoration
Tractor Supply Company

NAMED AND SPECIAL 4-H FUNDS

The following named and special funds have been established at National 4-H Council. We salute the people who established these funds and the people who have contributed to them. You can assure the legacy of 4-H by creating or contributing to a named or special fund. For more information on any of these funds or how you can establish new funds, please contact **Carolyn Fernandez at cfernandez@4-H.org or 301-961-2983.**

Edward W. Aiton Fund
Kenneth H. Anderson Fund
Richard R. Angus NAE4-HA Professional Leadership Recognition Fund
Jim and Marcia Borel International 4-H Fellowship
George L. Brown Multicultural Immersion Fund
Donald and Toni Daley Fund
Gary L. Davis Excellence in Leadership Award Fund
Raymond C. Firestone 4-H Leadership Fund
John M. Fisher Fund
Gail and Edwin M. Gershon Scholarship Fund
Mary Nell Greenwood Fund
Agnes M. Hansen Fund
David C. Hardesty Fund
Becky and Jay Kaiserman Fund
Mary Ann Krug Fund
Lynn Luckow Learning Fund
Miener-Welman Fund
Denise Miller Fund
Norman C. Mindrum 4-H Education Fund
NAE4-HA Designated Fund (aka Clover Pledge)

National 4-H Conference Fund In Memory of Elsie J. Carper
Onizuka 4-H Fund for Excellence
Ethel and Kenneth Pickett Endowment Fund
Elaine R. and Paul E. Pitts Fund
Dalton and Ruby Proctor Endowment Fund for the NC Lobby
President's Innovation Fund
Program Assistant Fund
Salute to Excellence 4-H Volunteer Recognition Fund
Luke M. Schruben Memorial Fund
Roger Stewart Fund
Stiles Scholarship
Norman A. Sugarman Fund
Edward R. Tinker Fund
Gertrude Warren Memorial Fund
Stanley J. Whitman, Sr. and Helen W. Whitman Fund
Thomas E. Wilson Fund

THE NATIONAL 4-H HERITAGE CLUB

PLANNED GIVING 4-H PIONEERS

Benefactors who made their planned gifts prior to the establishment of the National 4-H Heritage Club by the Board of Trustees in 2007.

Edward W. Aiton*
Jeannette S. DeMure*
Edward R. Tinker* Charitable Trust
Agnes M. Hansen*
Tena B. Klein*
Frieda R. Schroder*
Luke Schruben*
Florence Van Norden*

The National 4-H Heritage Club, established by the Board of Trustees in 2007, is National 4-H Council's planned giving society recognizing individuals who have made deferred gifts through their estate plans or cash gifts designated to an endowed fund. **For information on making a legacy gift to 4-H, please contact Carolyn Fernandez at cfernandez@4-H.org or 301-961-2983.**

Honor Roll

CHARTER MEMBERS

Benefactors who made planned gifts by September 30, 2009.

John A. Allen, Jr.
Richard R. Angus
David E. and Frances K.
"Sue" Benedetti
Erna Bamford Breton
Marcius and Elna Butterfield
Anonymous
Susanne G. Fisher*
Don and Carolyn Floyd
Gail and Edwin M. Gershon
Gardiner and Violet Graham*
Anita Hollmer Hodson
and Family
Jim (James C.) Kemp
Dan A. Klingenberg
Mrs. J.O. (Gladys) Knapp*
Anonymous
Larry L. Krug
Sandra Link Lignell
Mary Kay Merwin
Melanie Miller
Dr. Robert H. Miller and
Mrs. Vivian E. Miller
Beverly and Mason Miller*
Wayne Nierman and Linda
Gould Nierman
Kenneth and F. Ethel Pickett*
Elaine R. Pitts
Dalton R.* and Ruby H. Proctor
Elizabeth N. and William R.
Sheldon*
Jennifer L. Sirangelo
Jennifer R. Snelson-Wells
and Robert M. Wells
John C. and Nancy C. Sterling

Jo Ann Tilley
Eleanor L. Wilson
Mary Lee and Douglas A.* Wood

HERITAGE MEMBERS

Benefactors who made planned gifts after October 1, 2009

Michael and Sharon Anderson
D. Rex Blankenship
Ellen P. Elliott
Charles Eugene Finley and Carol Louise Finley Trust
Adrienne Susan Haney
Jeff and Jacque McCullough
Duane R. Nelson*
Deloris J. Pourchot*
Francis and Sibyl Pressly
Jim Rutledge
Bo Ryles
Justus W. Seaman*
Russell W. Smith*
Lowell H. and Verna May K.* Watts
Donald and Rita Weeks
Kathryn and Scott Whitaker
Mrs. Neva N. Wing*
Betty Y. Wise*

*Deceased

We make all efforts to ensure accuracy. If your name is not listed correctly or in the manner you wish, please contact Betsy Johnson at bjohnson@4-H.org or 301-961-2817.



NATIONAL 4-H COUNCIL

In 4-H, we believe in the power of young people. We see that every child has valuable strengths and real influence to improve the world around us. We are America's largest youth development organization—empowering nearly six million young people across the U.S. with the skills to lead for a lifetime.

Learn more online at: www.4-H.org

