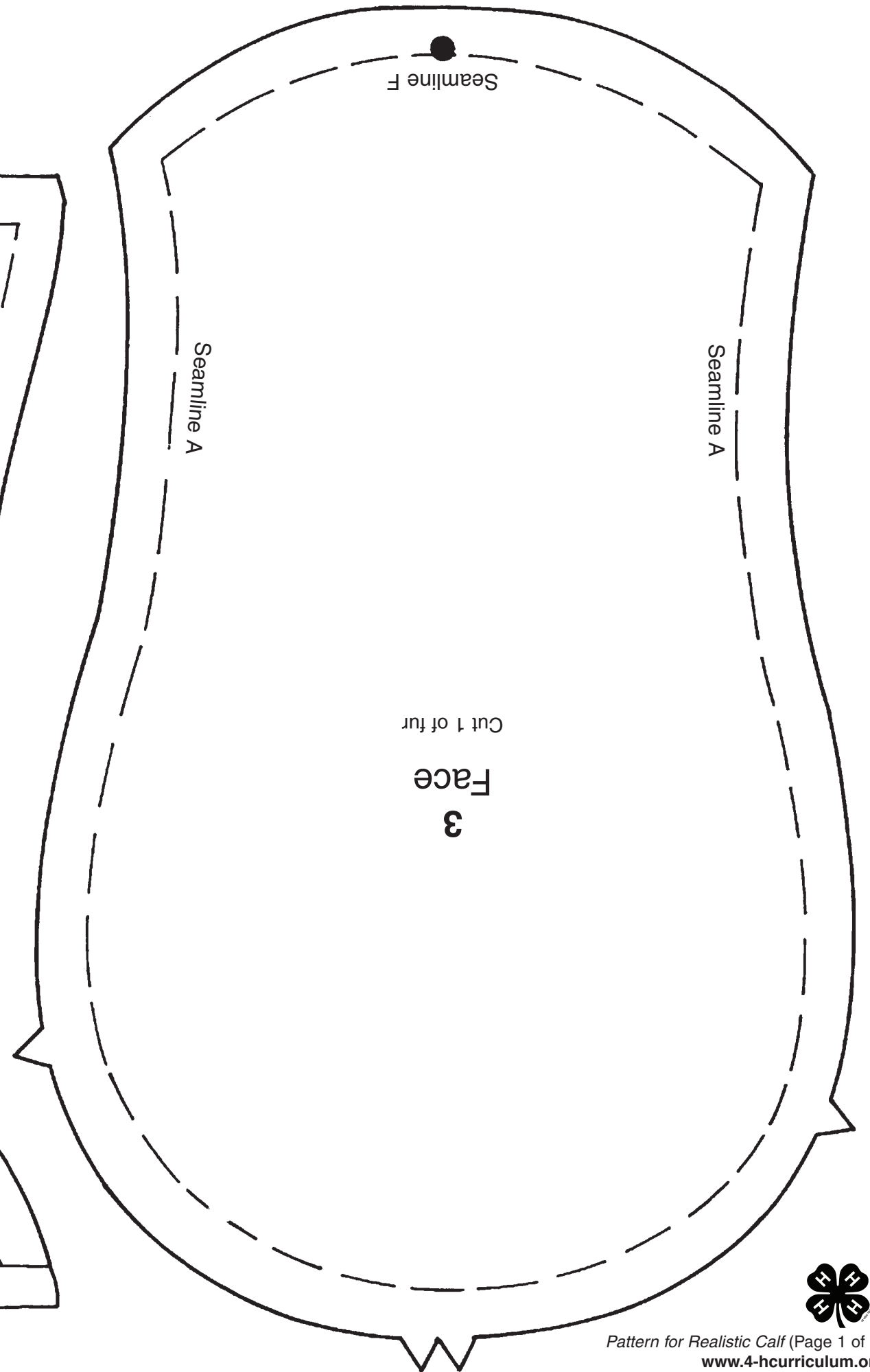
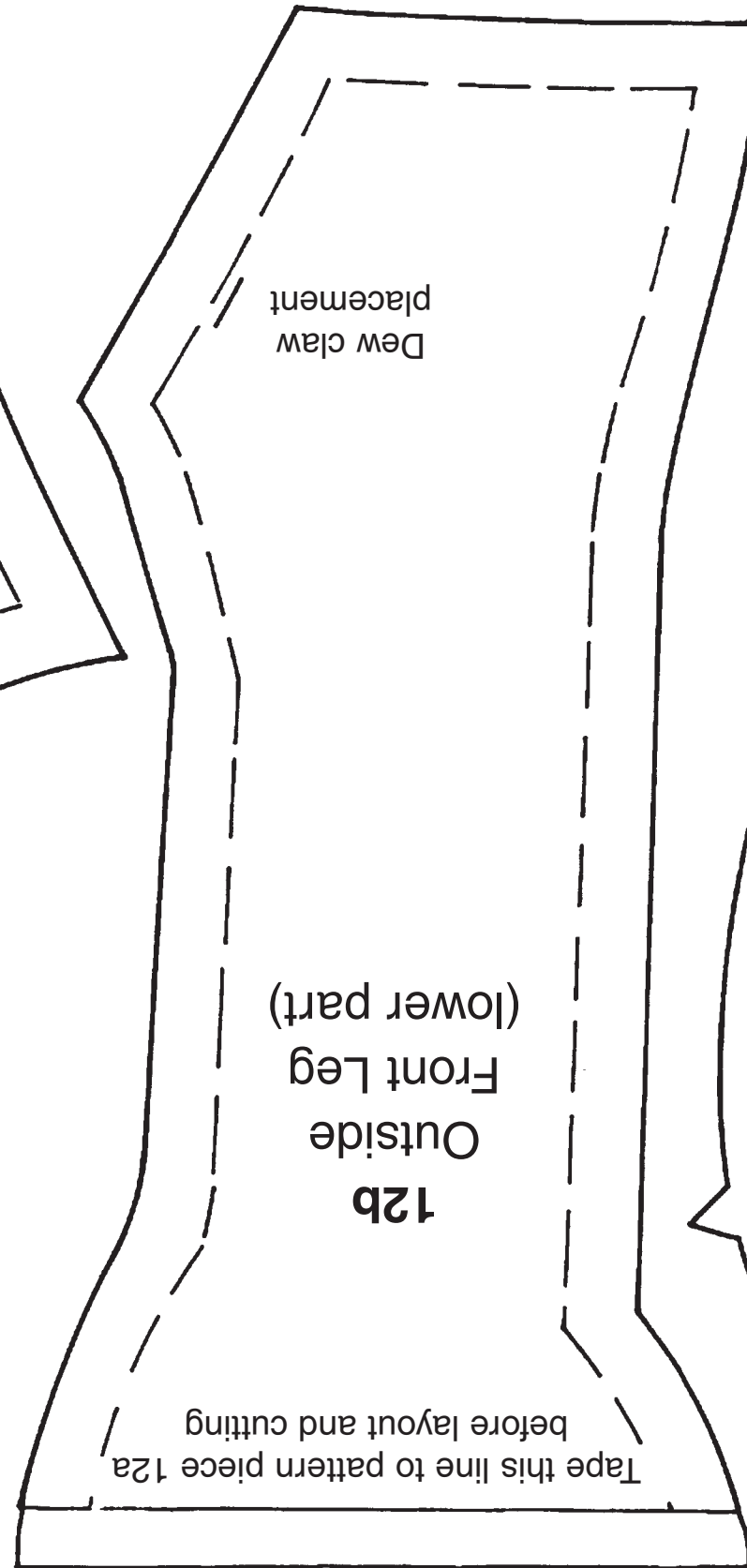
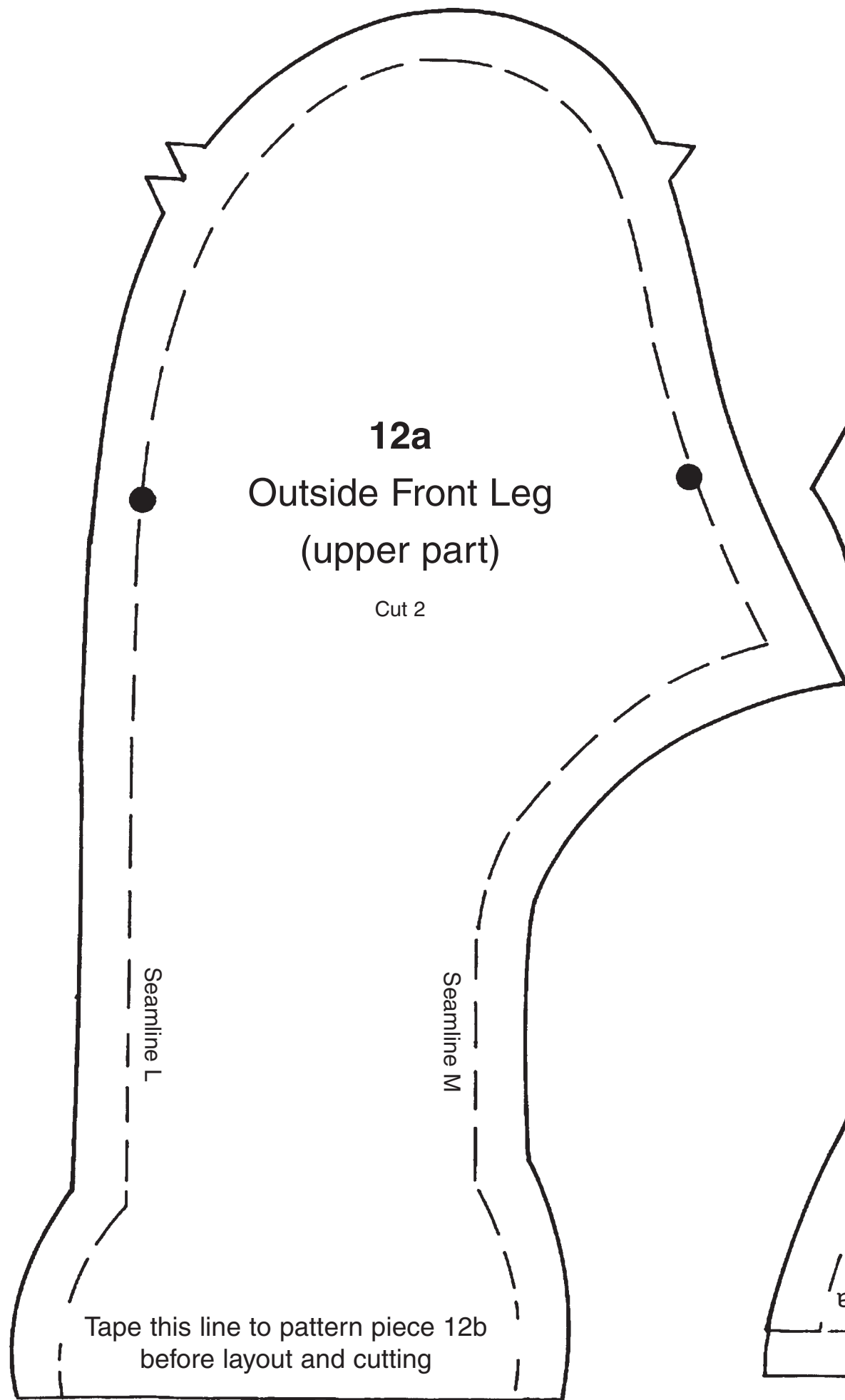
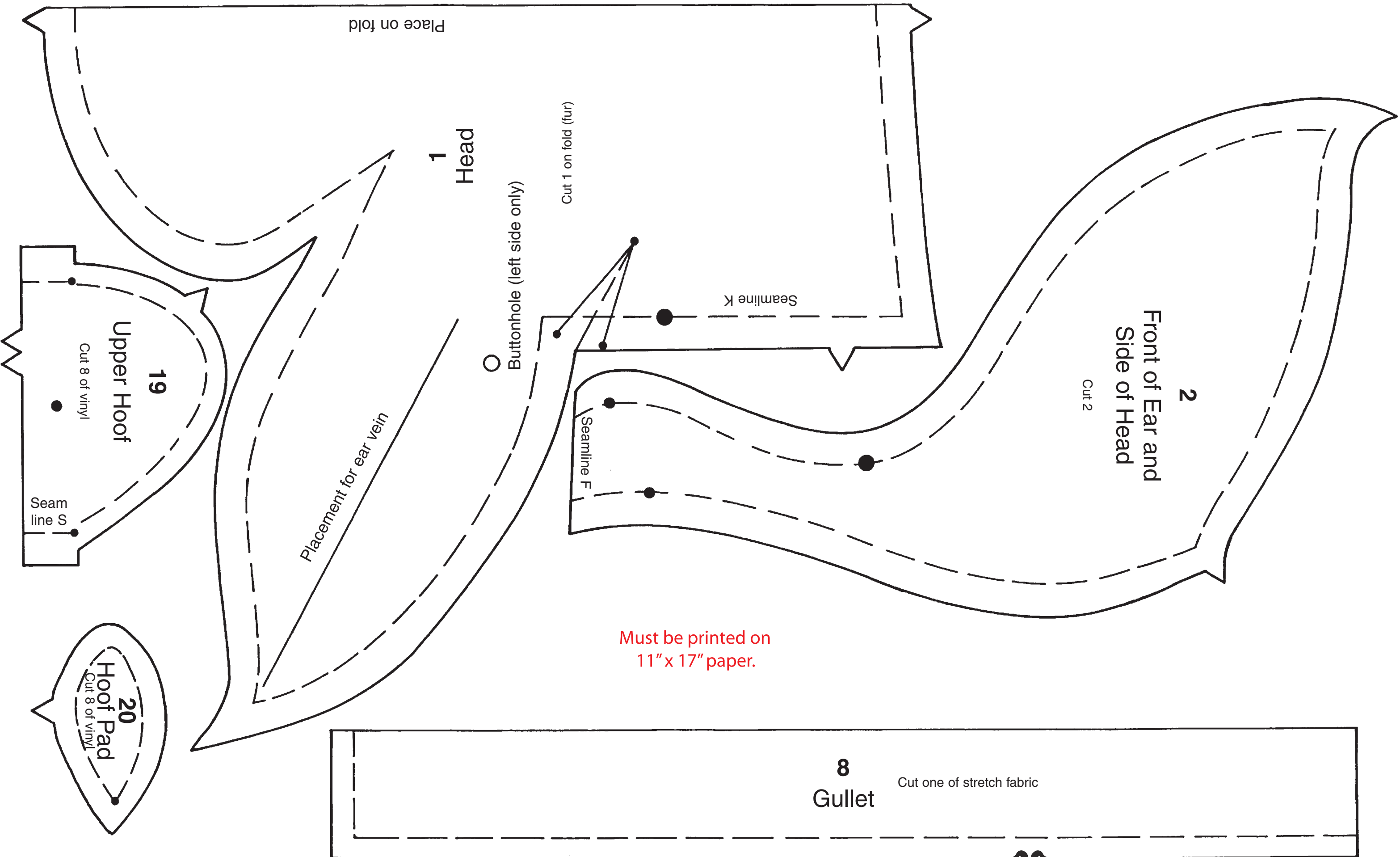
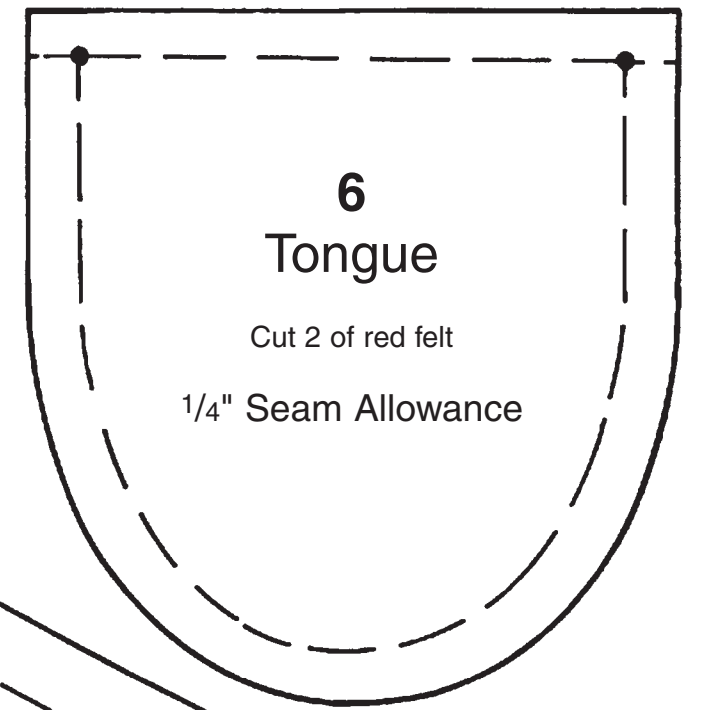
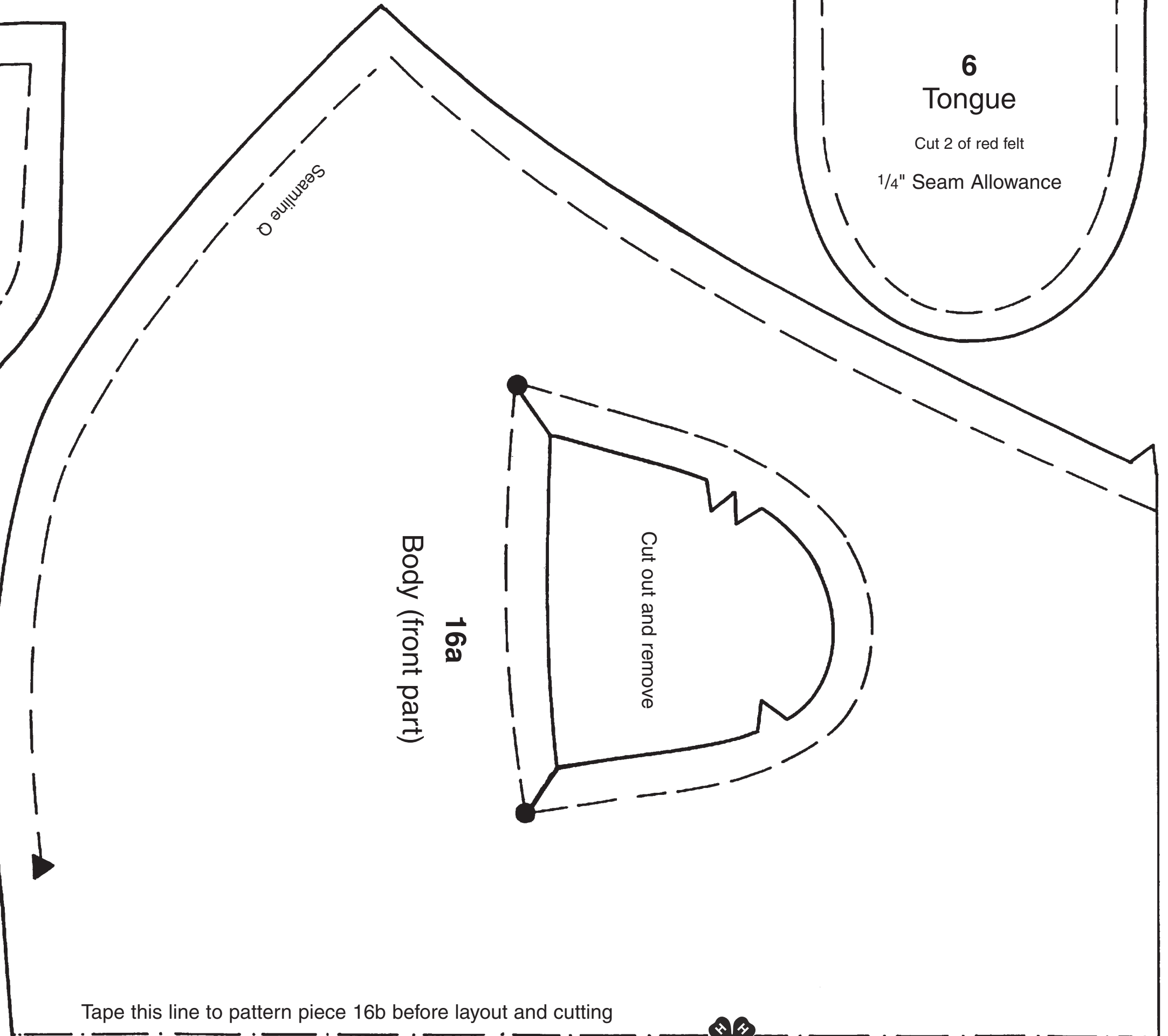
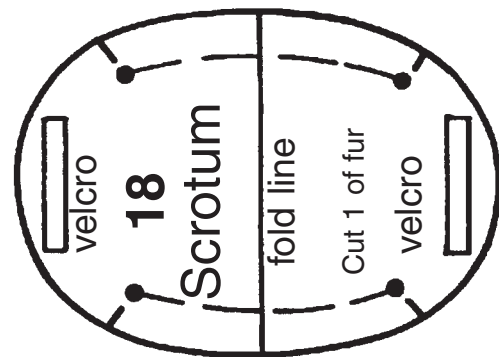
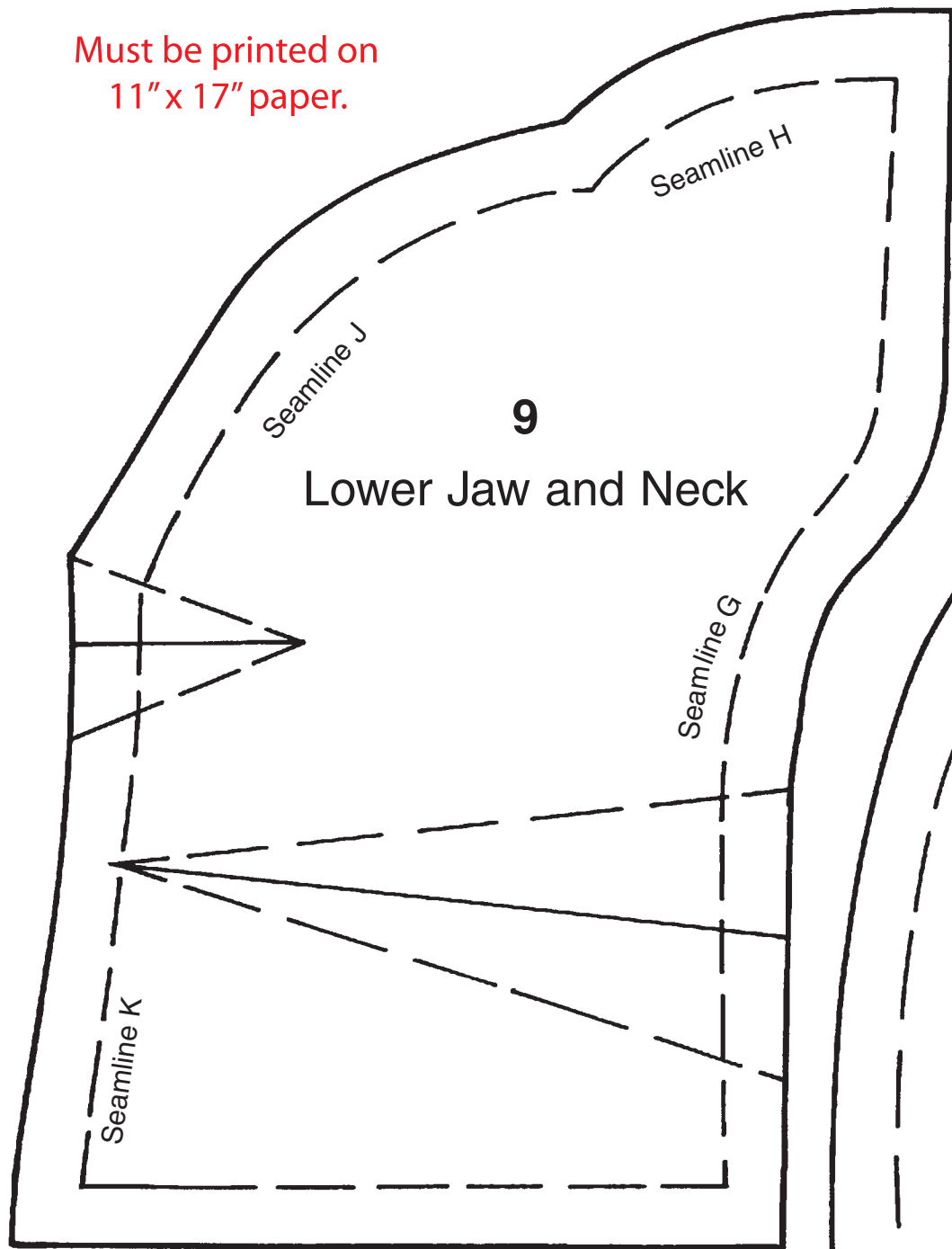


Must be printed on
11" x 17" paper.

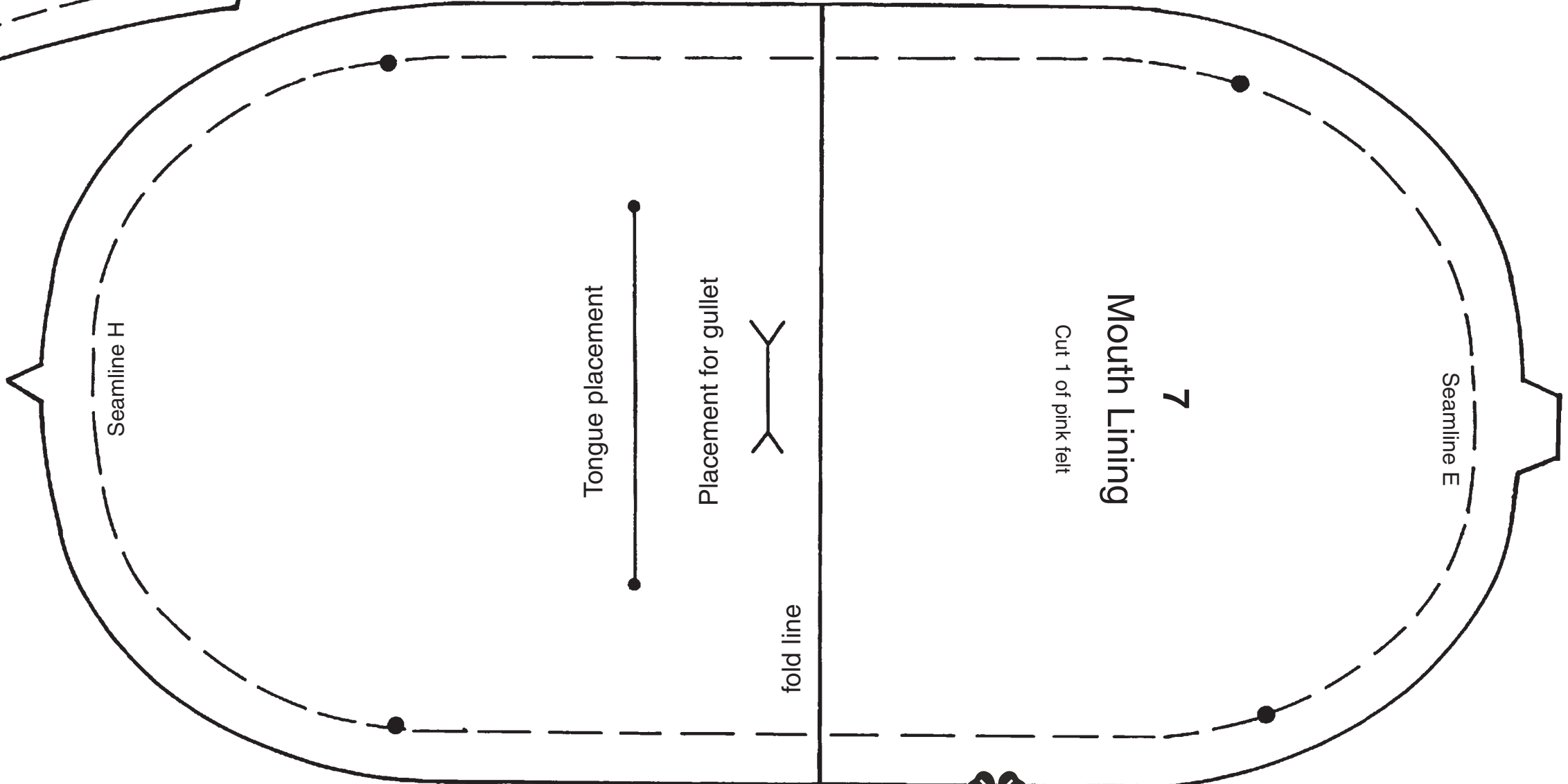
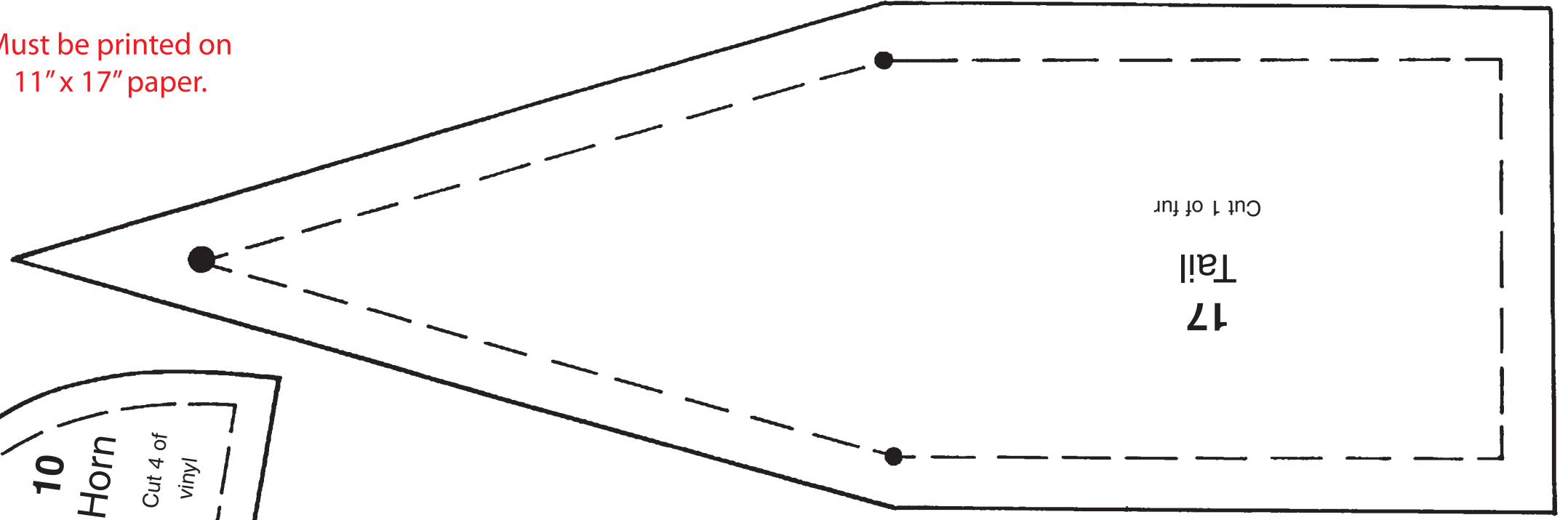
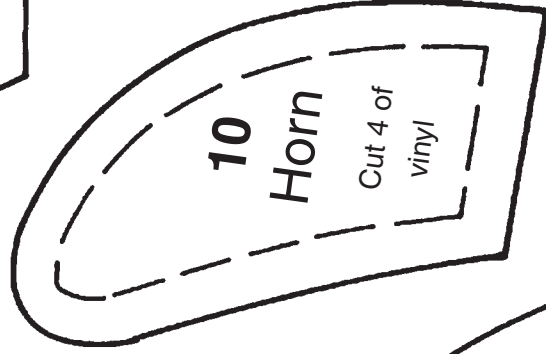
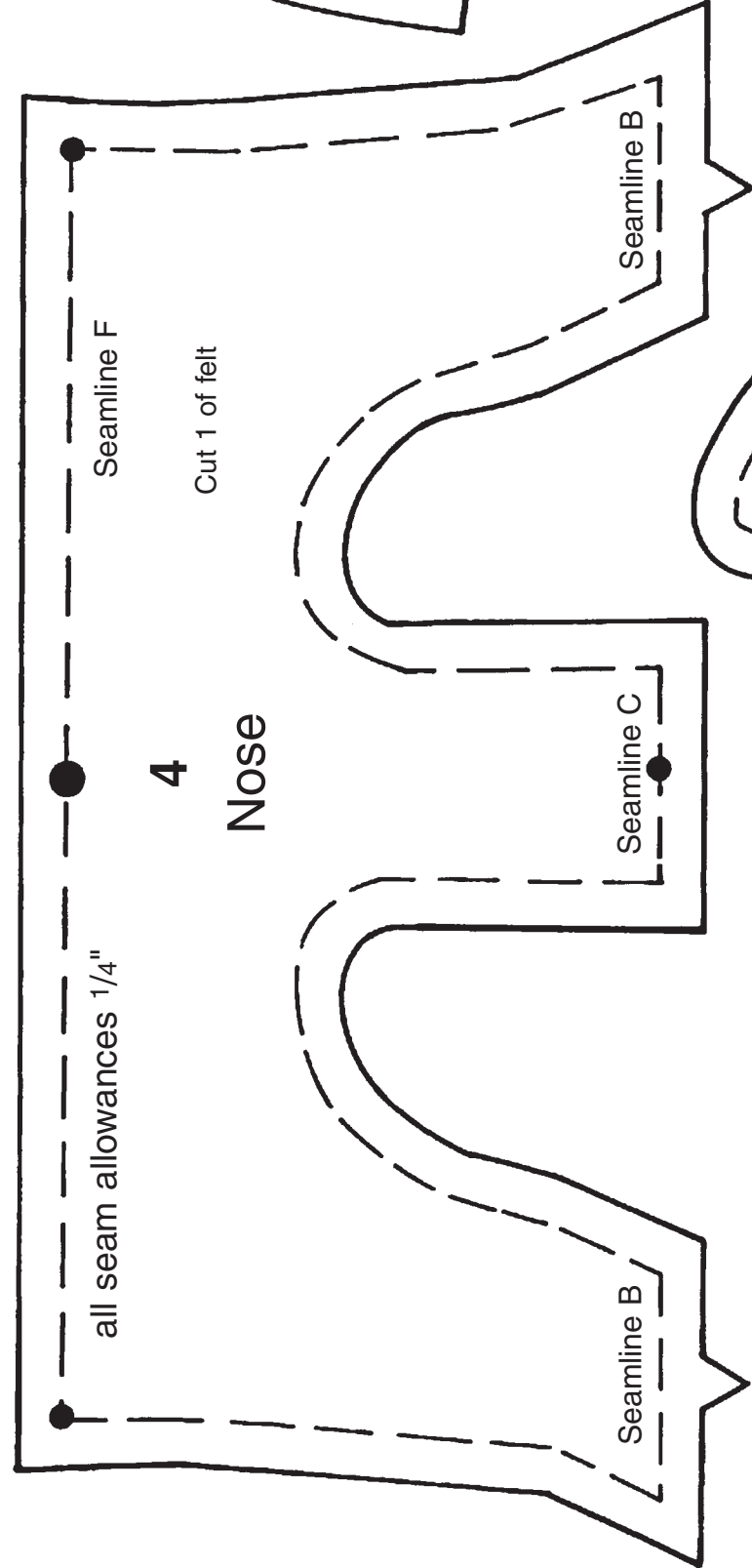
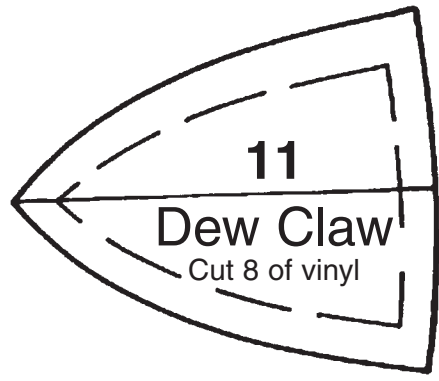




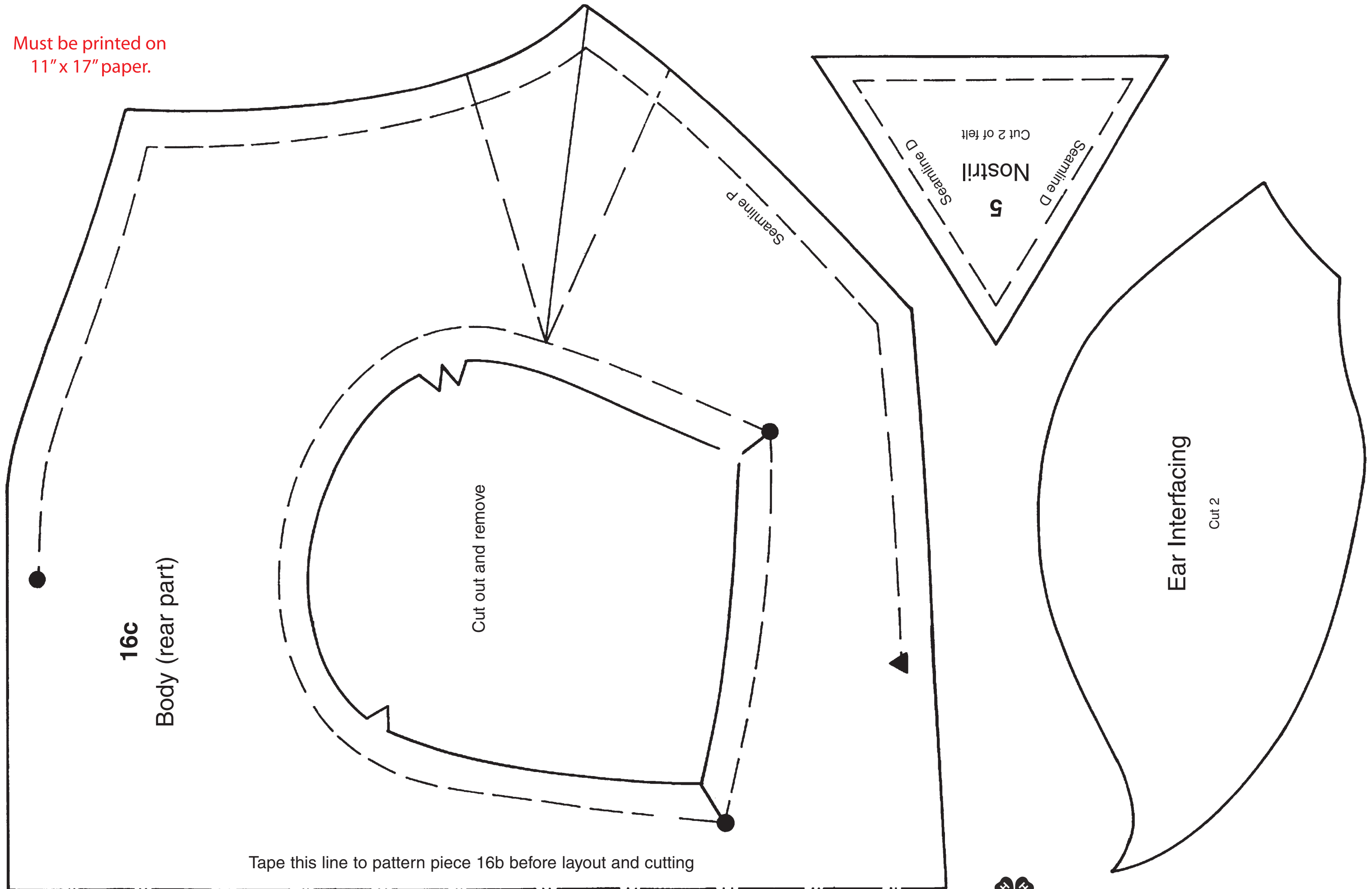
Must be printed on
11" x 17" paper.



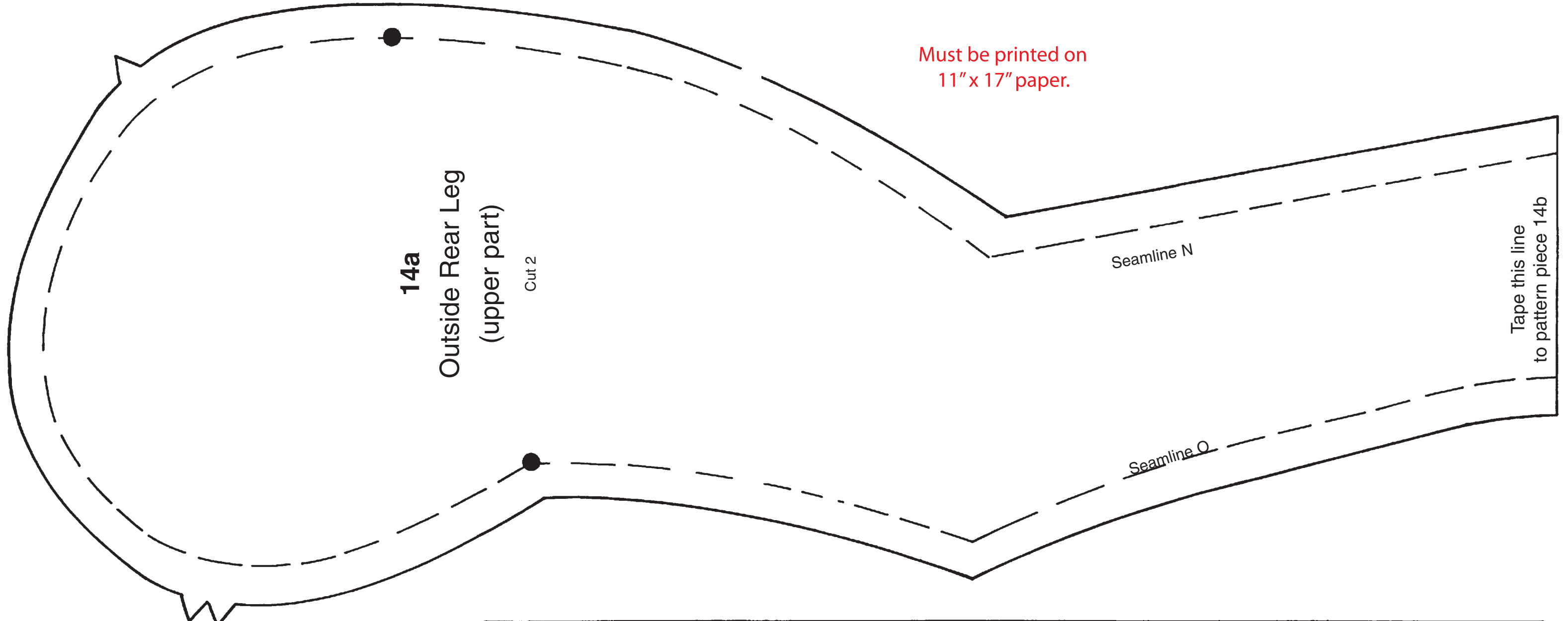
Must be printed on
11" x 17" paper.



Must be printed on
11" x 17" paper.



Must be printed on
11" x 17" paper.



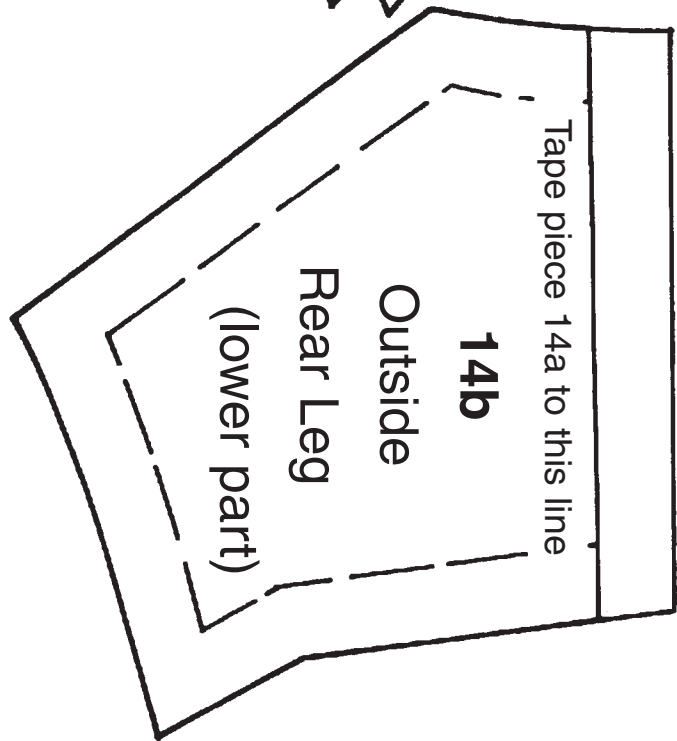
14a
Outside Rear Leg
(upper part)

Cut 2

Seamline N

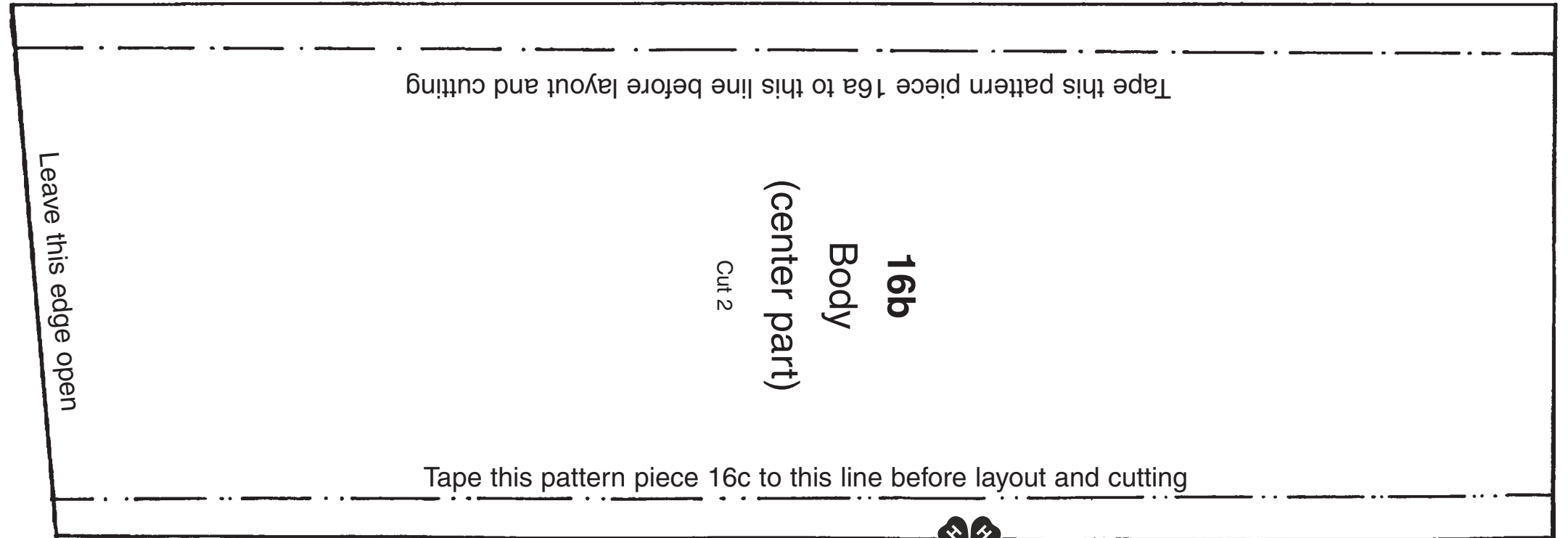
Tape this line
to pattern piece 14b

Seamline O



Tape piece 14a to this line

14b
Outside
Rear Leg
(lower part)



16b
Body
(center part)

Cut 2

Tape this pattern piece 16a to this line before layout and cutting

Tape this pattern piece 16c to this line before layout and cutting

Leave this edge open



